

Thrust Frame - Latching - 308A / 339A



Part No. FA40032F (308A), FA43500F (339A)

- **Designed To Work In 96"/108"* Minimum ID Or Trenchbox Shafts •**
- **Independent Jacking & Rotation Operation •**



The GBM 339A latching frame is shown with round shaft adapters.

FEATURES

- Assembly consists of the latching frame, drive swivel adapter, alignment adapter and operator platform.
- Three speed hydraulic operator controlled motor.
- Hydraulic latching mechanism to advance and retract gear box assembly.
- Hydraulic pressure gauges for monitoring jacking and rotation system pressures.
- Quick coupler connections with lock for easy and secure hydraulic hose installation.
- Dual motor travel function for ease of advancing gear box along the frame.
- Jacking functions 0 to 26 gpm @ 5,000 psi.
- Rotation functions 0 to 34 gpm @ 5,000 psi.
- Complete with Powered Cutter Head (PCH) / Powered Reaming Head (PRH) controls.
- Independent control for hydraulic make-up tool.
- Optional round and square shaft adapters, and frame extensions available to conform to shaft requirements.
- Four adjustable legs with leveling screws for ease of frame height adjustment and leveling.

SPECIFICATIONS

| | |
|--------------------------------------|--------------------------------------|
| Dimensions (width x length x height) | |
| 308A | 48 x 92 x 62 in. (1219x2337x1575mm) |
| 339A | 52 x 108 x 62 in. (1321x2743x1575mm) |
| Assembly Weight With Shaft Adapters | |
| 308A | 6,000 lbs. (2,722 kg) |
| 339A | 6,600 lbs. (2,994 kg) |
| Latching Positions On Center | 8 in. (203 mm) |
| Cylinder Stroke | 10.5 in. (267 mm) |
| Operating Pressure (Max.) ... | 5,000 psi (34,475 kPa) |
| Elevation** | 31 to 48 in. (787 to 1,219 mm) |
| Operating Grade (Max.) | 10% |
| Pipe OD Diameter (Max) | |
| 308A | 28.5" (724 mm) |
| 339A | 31.5" (800 mm) |

| | |
|-------------------------|----------------------------|
| Gear Box | |
| Rotational Torque*** .. | 10,500 ft-lbs (14,238 N·m) |
| Jacking Force | 100 Ton (91 mt) |
| Pull Back Force | 50 Ton (45 mt) |
| Hydraulic Motor | |
| High Speed | Three Speed |
| Mid Speed | 50 rpm |
| Low Speed | 37 rpm |
| | 25 rpm |

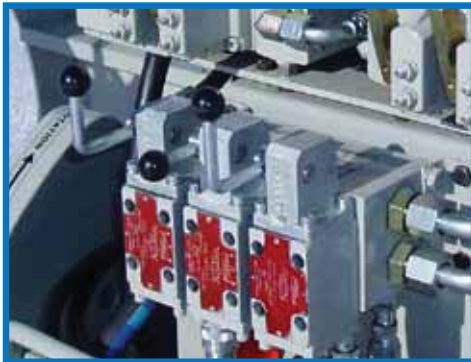
- * 96" ID Dia. Shaft - 308A; 108" ID Dia Shaft - 339A
- ** From shaft floor to drive center
- *** Output torque in low speed @ 5,000 psi



High pressure valves for jacking, rotation, frame travel, and PCH/PRH control functions.



The quick couplers connect to the pressure, return, load sense and case drain hydraulic hoses from the GBM P100Q or P150Q Power Pack.



Low pressure valves for hydraulic make-up tool, rotation speed and hydraulic latching functions.



Operator platform located 18" above shaft floor provides firm footing to keep the operators above the water and mud.



Hydraulic pressure gauges for monitoring thrust and rotation system pressures.



Drive Swivel Adapter With Fluid Connector And Alignment Adapter



Dual travel motors for ease of advancing gear box along the frame rails.



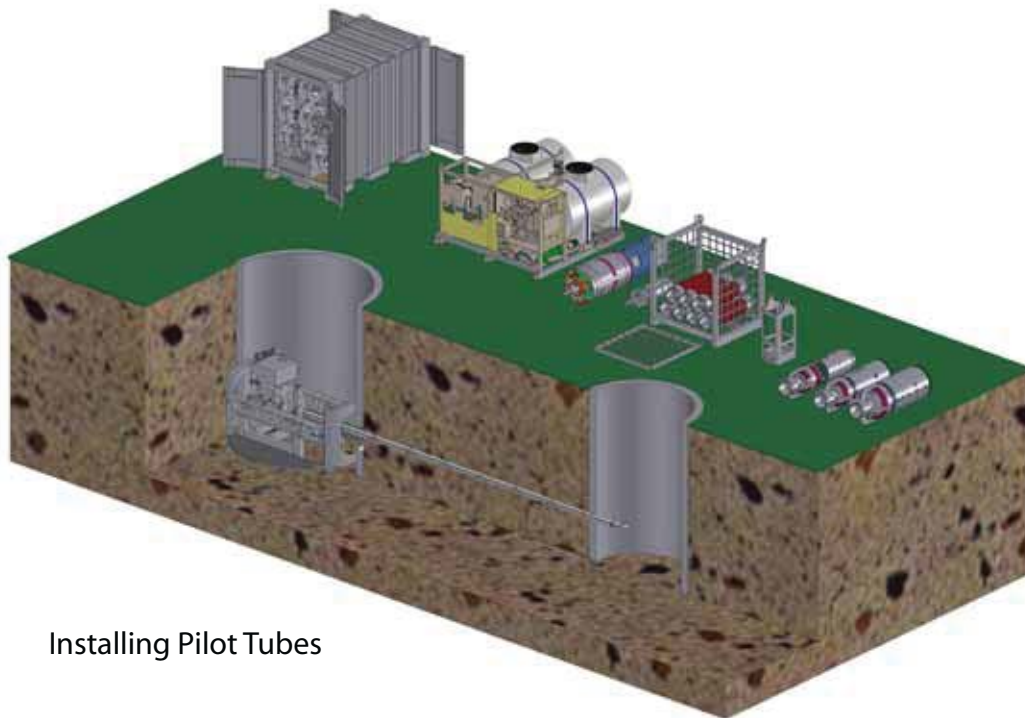
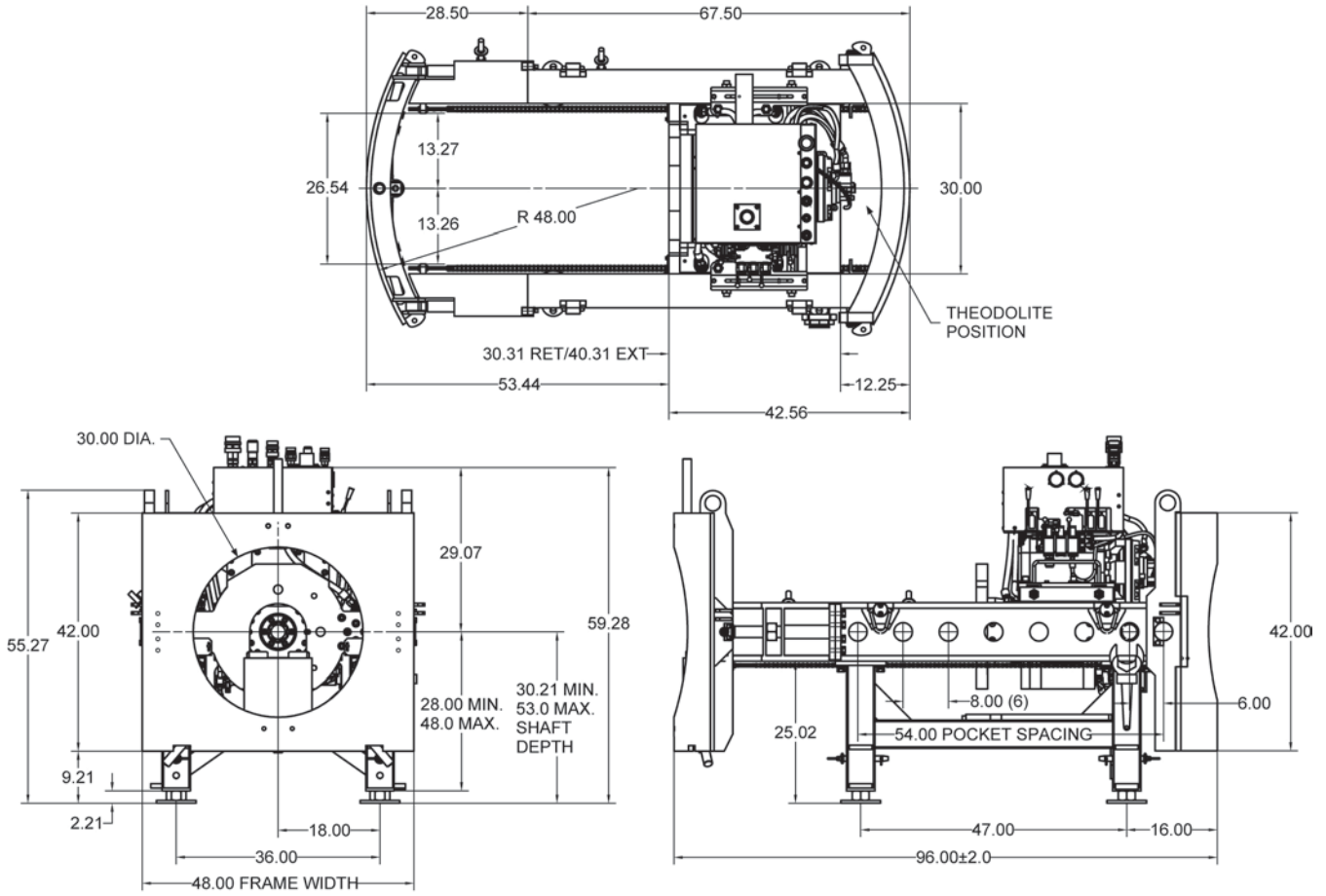
Frame extensions are available in 16", 24", 40" and 56". Frame shown with a combination of the 56" and 40" frame extensions.

Jacking Frame Dimensions - 308A



Minimum Shaft Requirements & System Layout

Dimensions are shown in inches



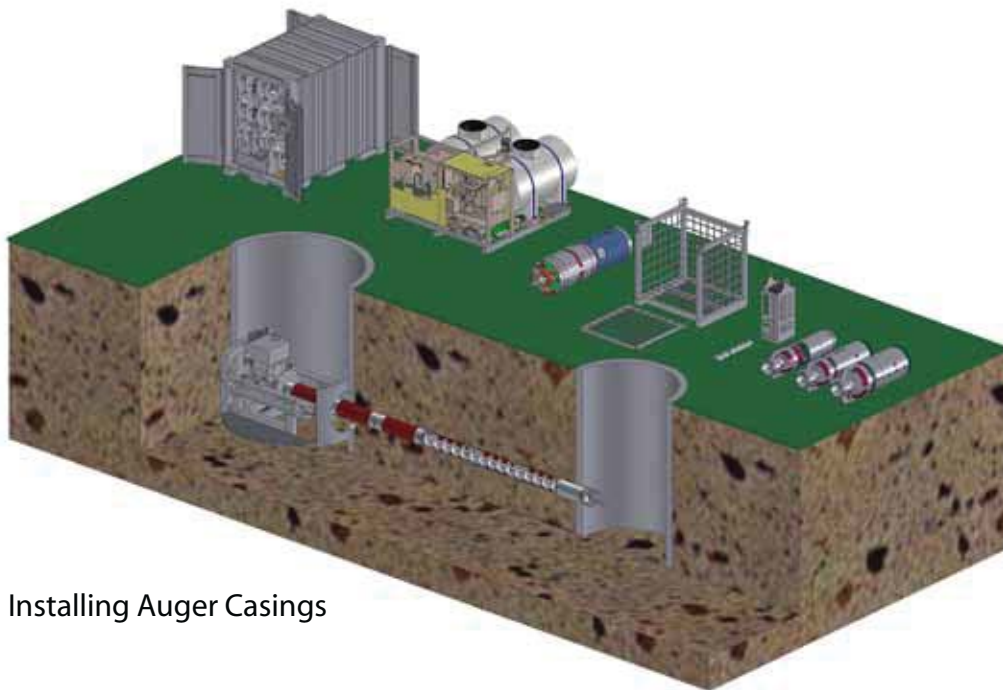
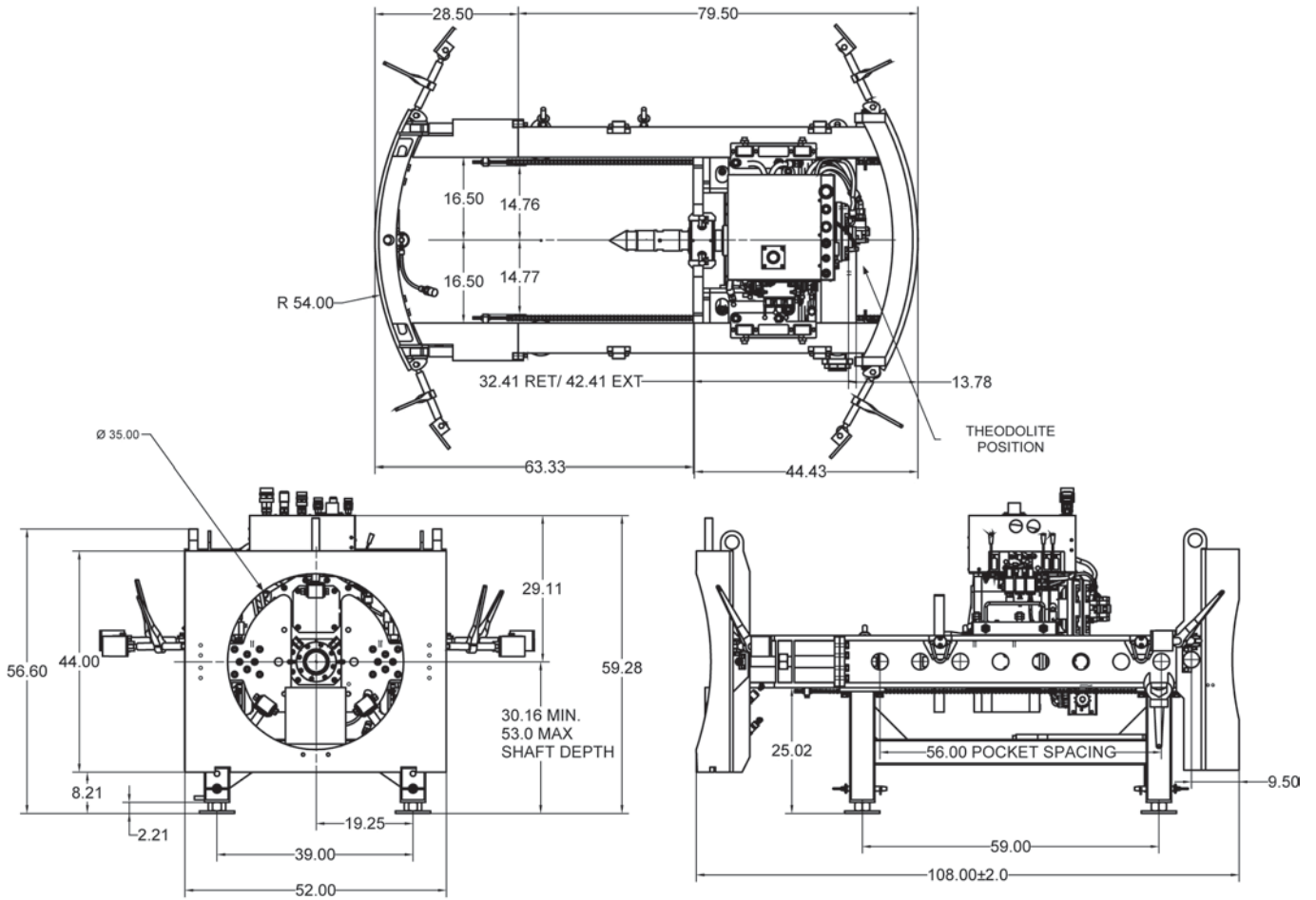
Installing Pilot Tubes

Jacking Frame Dimensions - 339A



Minimum Shaft Requirements & System Layout

Dimensions are shown in inches



Installing Auger Casings