

Bearing Swivel Assembly



Part No. FA48949F

- **Tool Designed For Cutter Head Assembly & Auger Boring Machine •**
- **Recommended For 24" OD Pipe & Smaller •**
- **50 Ton Maximum Thrust Capacity •**



FEATURES

- The bearing swivel is the tool between the pilot tube adapter and the Akkerman cutter head assembly or an auger boring machine to keep the pilot tubes stationary while allowing the rotation of the augers to remove spoils from the pipeline.
- Robust design with 3" hex connections for stiff or difficult ground soil conditions with no rock.
- Auger can be removed to inspect face for obstruction or repair of cutter bit.
- The bearing swivel is modeled for extended drive lengths with up to 24" OD with 50 ton maximum thrust capacity.

SPECIFICATIONS

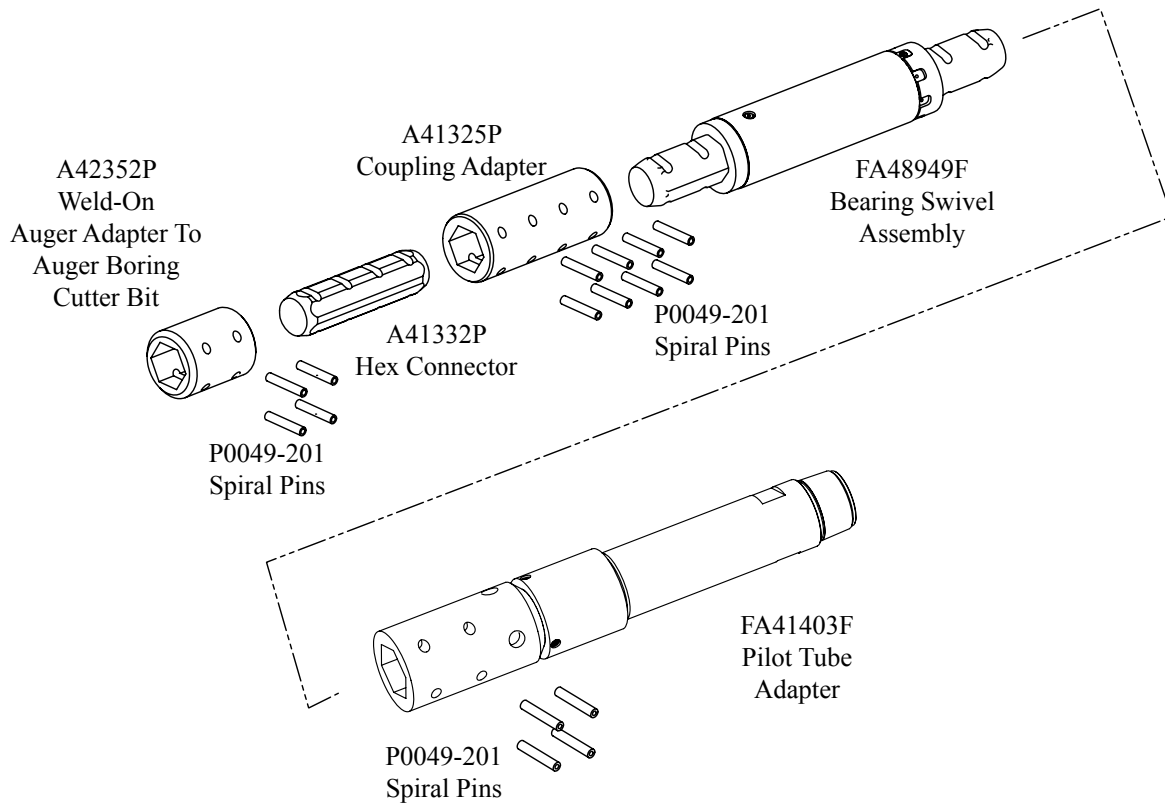
Assembly Length 29 in. (737 mm)

Assembly OD 5 in. (127 mm)

Swivel Weight (approx.) 100 lbs. (45 kg)

Bearing Swivel Assembly

Option 1: Direct Connection With Pilot Tubes



Option 2: Auger Pullback

