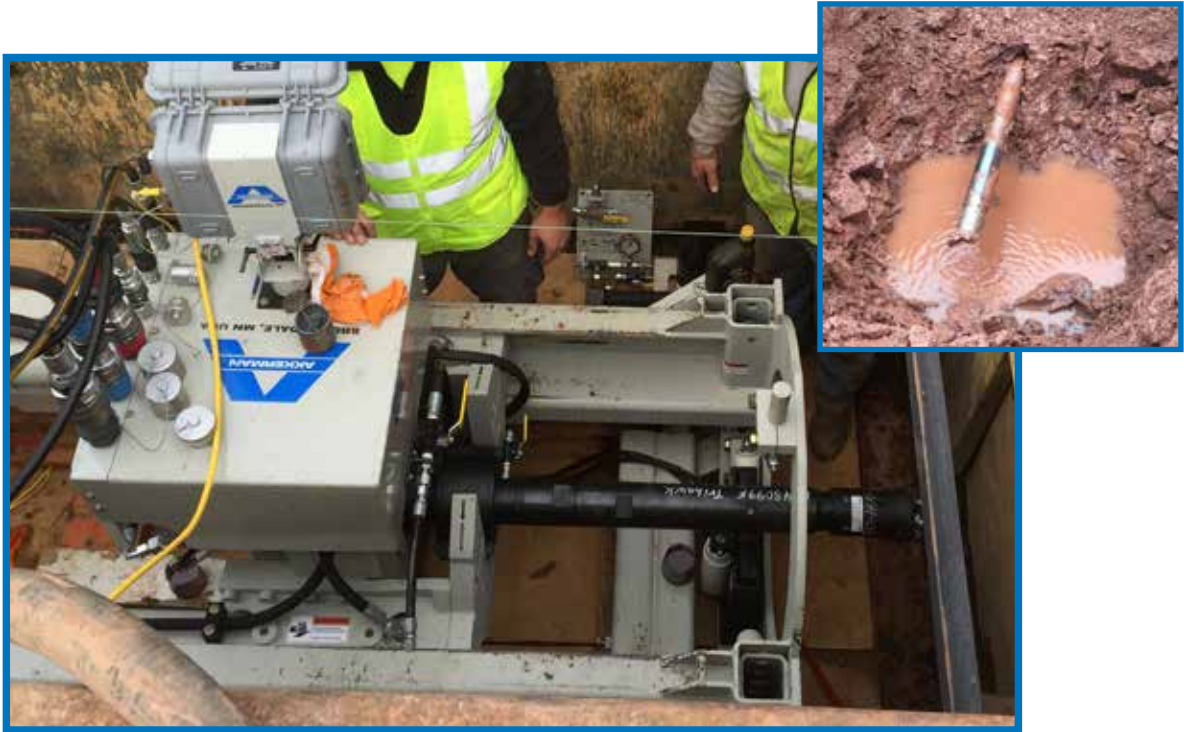


Pilot Tube Accessories - Rock Drill



Part No. FA48099F (Pilot Tube To TriHawk® Adapter)

- **Steerable To Maintain Line & Grade Through Rock** •
- **Drills Pilot Bore Measuring 5.5 In (140 mm) Diameter** •



FEATURES

- Assembly includes Akkerman Pilot Tube to TriHawk Adapter to work with TriHawk® drill bits I, III, IV, and V.
- Dual wall pilot tubes provide a means to lubricate the head and remove cuttings from head back to launch shaft.
- Standard Akkerman GBM target positioned in the target housing of the pilot tube to TriHawk adapter.
- A bentonite polymer must be added to cool the drill bit and suspend cuttings during transport from the drilling bit to the launch shaft. The polymer fluid is pumped into the pilot tube annular space, through the pilot tube adapter then out through the TriHawk tooling bit port.
- Boltless modular design of the square-drive spline makes it easy to interchange drill bits.
- TriHawk I drill bit is an aggressive cutting tool for boring in soft rock conditions up to 8,000 psi.
- TriHawk III drill bit is the cutting tool for soft to medium rock up to 12,000 psi and cobble bores.
- TriHawk IV drill bit is designed for glacial till, and heavy, overburden cobble or fractured rock.
- TriHawk V drill bit provides unbeatable performance in round rock cobble, flat river stone, hardpan and loose fill.
- TriHawk VI drill bit bores medium to hard rock formations.



TriHawk I
P0050-164



TriHawk III
P0050-162



TriHawk IV
P0050-161



TriHawk V
P0050-160



TriHawk VI
P0050-163