

Remote Hydraulic Power Pack



Part No. FA21965F

- **BiCon Container Supplies Hydraulic Power To Jacking Frame & Auxiliary Functions •**
- **Hydraulic High Pressure Pump With 13 gpm @ 8,000 psi •**



FEATURES

- Compact power distribution control center.
- Main variable displacement pump with 75 hp electric motor with electro-hydraulic (RPA) control.
- Operator monitors power pack speed, jacking force and oil temperature from control container.
- Three position valves to extend/retract jacking and IJS or auxiliary function.
- Equipped with pump and oil cooler for cooling the hydraulic oil in the reservoir.
- An E-Stop button on the bulkhead will stop all electrical and hydraulic bulkhead component functions.
- The input power is monitored for proper three phase electrical power to prevent component damage.
- Housed in BiCon container for easy transport.
- Easy access bulkhead connections for quick connectivity.

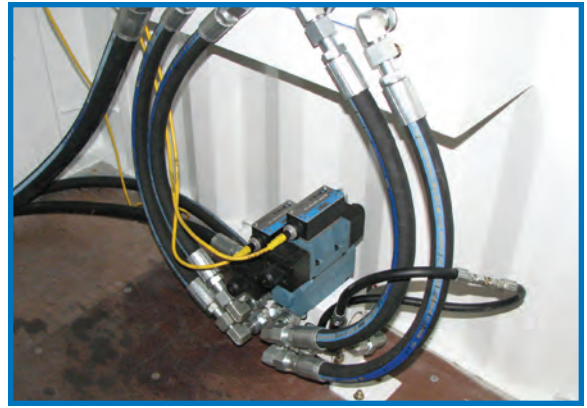
SPECIFICATIONS

Dimensions (width x length x height)
..... 8 x 9.8 x 8.5 ft. (2.4 x 3 x 2.6 m)
Container Weight 9,500 lbs. (4,309 kg)
Reservoir Capacity 195 gal (738 L)
Hydraulics
Main Hydraulic Pump
Speed 1,800 rpm
Flow 0 - 13 gpm
Pressure 8,000 psi

Hydraulics
Pilot Pressure Pump 1 gpm @ 300 psi
Cooling Pump 12 gpm
Jacking Functions
Jacking 13 gpm @ 8,000 psi
IJS 13 gpm @ 8,000 psi
Auxiliary 13 gpm @ 3,000 psi
Electrical
Power Requirement 200 amp, 480V, 3 Phase
Main Hydraulic Motor 75 HP, 480V
Cooling/Pilot Pressure Motor 2 HP, 480V



High Pressure Hydraulic Pump (13 gpm @ 8,000 psi)
& 75 HP Electric Motor



Three Position Valve For Main
Jacking Extend/Retract, IJS & Auxiliary



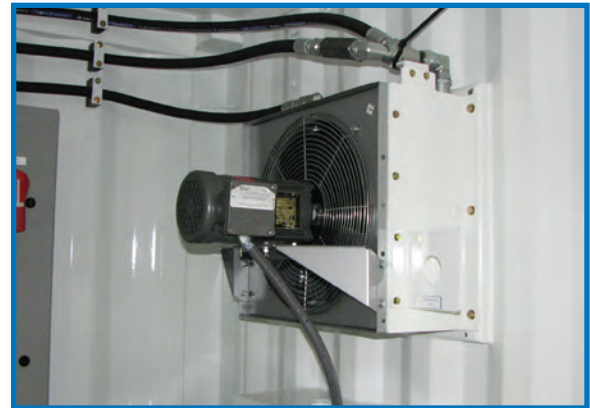
Hydraulic Reservoir 195 gal (738 L)



Hydraulic Filtration for Hydraulic Return &
Hydraulic High Flow Return Circuits



Bulkhead Panel For Electric, Hydraulic,
Communication Connections & E-Stop Button



Oil Cooler Fan Assembly



Electric Box with Main Disconnect Switch, Phase
Error Indicator, Oil Cooler Fan Switch & Light Switch



2 HP Electric Motor With Tandem Cooling
and Pilot Pressure Pumps