

Power Pack - P100Q



Part No. FA42440F

- Provides Hydraulic Power To Operate Jacking Frame •
- Remote Pendant For In-Shaft Operation Control •



FEATURES

- Assembly comes complete with the GBM P100Q Power Pack, remote control pendant, 50 foot hydraulic hose set to connect hoses from the power pack to the GBM 240A/308A/339A jacking frame, & standard tooling for pilot tube installation.
- Standard tooling includes: pilot tube breakout tool, pilot tube scraper, pilot tube to reaming head adapter, steering head kit, pilot tube support bars, guidance system, wrench set, and launch shaft breakout tool.
- Access doors on both ends for engine ventilation and a walk-through tooling storage area.
- Powered by a four cylinder, liquid cooled, charged air cooling with electronic governor, 99 HP tier III diesel engine.
- Two load sense, variable volume piston pumps provide smooth efficient operation.
- Remote control pendant with 50 feet of cable, controls the engine functions in shaft.
- Hydraulic hoses are stored on hose reels for ease of hose routing to jacking frame.
- Quick coupler connections with lock for easy and secure hydraulic hoses at jacking frame.
- The 25 gpm cooling circuit maintains hydraulic oil at low operating temperatures.
- Hydraulic pressure gauges for monitoring jacking and rotation system pressures.
- Equipped with E-Stop control for quick access at container.

SPECIFICATIONS

Dimensions

Height 82 in. (2,083 mm)

Width 58 in. (1,473 mm)

Length 96 in. (2,438 mm)

Weight 6,220 lbs. (2,821 kg)

Fluid Capacities

Fuel Tank 100 gal (378 L)

Hydraulic Reservoir 50 gal (189 L)

Power Unit

Four Cylinder Diesel Engine 99 HP (74 kW)

Pumps

Variable Piston

Jacking 0 to 34 gpm (0 to 129 L/min)

Rotation 0 to 34 gpm (0 to 129 L/min)

Operating Pressure* 5,000 psi (34,475 kPa)

Gear Pump (Cooling) 25 gpm (95 L/min)

* Maximum

Breakout Tool

Breaking Torque 12,000 ft/lbs (16,272 N·m)

Power Source 110 VAC

Pilot Tube/Reaming Head Adapter

..... 4.15" OD x 3" ID Hex Core x 5" OD



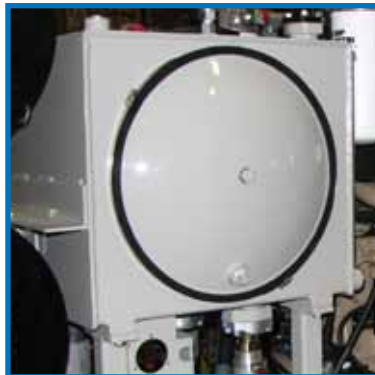
Walk-Through
Tooling Storage
Area



Hose Reels For Ease
Of Hose Management



Four Cylinder, 99 HP Tier III
Diesel Engine



50 gal (189 L)
Hydraulic Reservoir
The hydraulic reservoir
includes an oil level and
temperature gauges.



The remote pendant contains the
engine tachometer, hourmeter, engine
oil pressure gauge, water temperature
gauge, electronic engine speed control,
and ignition switch.



Suction Line Hydraulic Shutoffs
For The
Feed Pump, And Cooling Pump



Filtered Hydraulic
Return Oil With Indicator



Pilot tube breakout tool
is used in the reception shaft to
loosen the pilot tube joints.