



OPERATOR'S MANUAL

**Powered Reaming Head
PRH 20k Drive S/N: FA48030F
Supplement for the
4812A/4800 Operator's Manual**

Publication No. 050098A

Rev. No. 150619

© Akkerman Inc. 2015
All Rights Reserved

Akkerman Inc. 58256 266th Street Brownsdale, MN 55918
Phone: 507-567-2261 Fax: 507-567-2605 email: akk@akkerman.com

SERVICE • RELIABILITY • INNOVATION

Introduction

This supplement to the 4812A/4800 Operator's Manual contains important safety, operation, and maintenance information for your Akkerman Powered Reaming Head Attachment. You must read and understand this manual AND your GBM Operator's Manual before you operate and maintain this equipment. Keep this manual with your Guided Boring Machine at all times. Additional copies of this manual may be purchased from the Akkerman Aftermarket Support Department, or downloaded from the Akkerman web site at www.akkerman.com.

The contractor is responsible for the overall safety program on the job site. Use this manual as a part of the safety program.

The use of second rate parts could affect the efficient performance of this equipment. ALWAYS use genuine Akkerman parts.

Understand safety signal words, DANGER, WARNING, CAUTION, SAFETY INSTRUCTIONS, and NOTICE. When you see these words in this manual or on safety decals mounted on your equipment, follow the safety message to avoid personal injury and/or property damage.

▲ DANGER Indicates an extremely hazardous situation which, if not avoided, WILL result in death or serious injury.

▲ WARNING Indicates a potentially hazardous situation which, if not avoided, COULD result in death or serious injury.

▲ CAUTION Indicates a potentially hazardous situation, which, if not avoided, MAY result in minor or moderate injury. It may also be used to alert against unsafe practices.

SAFETY INSTRUCTIONS Usually consists of individual messages stating procedures or actions that must be followed for the safe operation of a product.

NOTICE Identifies potential property damage and important installation, operator, or maintenance information.



Powered Reaming Head DN600

The Powered Reaming Head is the upsizing tool for displaceable ground installed between the pipeline of 16" OD temporary casings and augers and the final product pipe. The spoils are moved to the reception shaft for removal.

If you find any errors with this manual or know of ways to improve procedures, please let us know. Mail your suggestions to: Akkerman Inc, ATTN: Technical Publications, 58256 266th Street, Brownsdale, MN 55918.

Akkerman Inc. reserves the right to improve its product without notice or obligation.

Contents

Safety	1	Lubricants	6
Be Alert For Safety Information	1-1	PRH Gear Box Lubricant..	6-1
Read Operator’s Manual	1-1	Gear Box Assembly Lip Seals	6-1
Wear Protective Clothing	1-1	Storing Lubricants	6-1
Lockout Power Before Servicing	1-2	Periodic Maintenance	7
Hydraulic Oil/Fluids Under Pressure	1-2	Lubrication & Maintenance Intervals	7-1
Beware of Suspended Loads	1-2	Lockout Power Before Servicing	7-1
Keep Personnel Away From Moving Parts	1-3	Hydraulic Oil/Fluids Under Pressure	7-1
Unauthorized Welding	1-3	Avoid Pinch Points	7-2
Handling Auger Casings	1-3	Maintenance Charts-Powered Reaming Head..	7-3
Regularly Clean/Inspect Equipment	1-4	Prior To Each Job Launch	7-3
Practice Safe Maintenance	1-4	After Each Drive	7-4
Avoid Pinch Points	1-4	Every 2000 Feet	7-5
Test Shaft & Tunnel Ventilation	1-5	Detailed Maintenance Procedures	7-6
Fire Prevention	1-5	Prior To Each Job Launch	7-6
Keep Away From Auger	1-5	After Each Drive	7-10
High Pressure Hydraulics	1-6	Every 2000 Feet	7-12
Keep Job Site Clean & Organized	1-6	Troubleshooting	8
Slippery When Wet	1-6	Specifications	9
No Smoking In Tunnel	1-7	Powered Reaming Head	9-1
Avoid Laser Light Exposure	1-7	Torque Chart	9-2
Recycle Waste	1-7	Identification Numbers	10
Terminology	2	Safety Data Sheets	11
Powered Reaming Head DN400	2-1	Warranty	12
Powered Reaming Head DN600	2-2	Index	13
Controls & Instruments	3		
GBM 4812A			
Rotation Pressure Switch	3-1		
Jacking Speed Switch	3-1		
Thrust Cylinder Control	3-2		
PRH - Auger Control	3-2		
Hydraulic Pressure Gauges	3-3		
Assembly	4		
Preparing Drive Assembly For PRH Housing..	4-1		
Installing DN400 HousingTo Drive Assembly..	4-4		
Installing DN600 HousingTo Drive Assembly..	4-11		
Operation	5		
Operating Guidelines	5-1		
PRH Installation Process	5-2		
Using The Powered Reaming Head	5-3		
Use Jetting & Pipe Lubrication With PRH	5-3		
Installing Powered Reaming Head	5-5		
Removing PRH From Reception Shaft	5-14		

Safety

BE ALERT FOR SAFETY INFORMATION

When you see this safety alert symbol on your equipment or in this manual, be alert to the possibility of personal injury or property damage.

Read all safety information.

Keep safety decals clean and in good condition.
Replace missing or damaged safety decals.



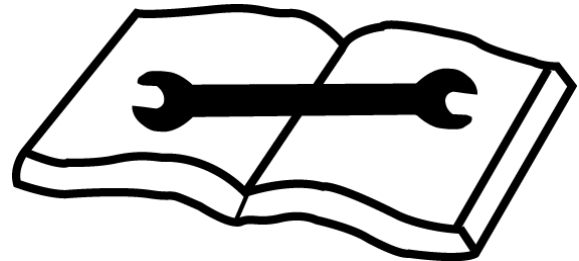
**ATTENTION!
BECOME ALERT!
YOUR SAFETY IS INVOLVED!**

READ OPERATOR'S MANUAL

⚠ WARNING Unsafe operation or maintenance can cause severe injury or death.

Read and understand the Operator's Manual before operating or servicing this equipment.

Any unauthorized modifications will void the warranty.



WEAR PROTECTIVE CLOTHING

Wear OSHA approved protective clothing, such as hard hat, gloves, safety goggles, earmuffs or ear plugs, face shield, and steel-toed boots, when operating and servicing this equipment.

Wear reasonably close fitting clothing and remove jewelry before working on or near this equipment. This will help prevent the danger of catching them in moving parts or controls.



LOCKOUT POWER BEFORE SERVICING

⚠WARNING Failure to lockout power before servicing can cause severe personal injury or death.

LOCKOUT main power supply before servicing. Electrical repairs must be performed only by a certified electrician.



HYDRAULIC OIL/FLUIDS UNDER PRESSURE

⚠WARNING Escaping oil or other fluids under pressure can penetrate your skin causing serious injury.

Release all pressure before performing maintenance or repairs. Never weld near pressurized fluid lines.

DO NOT use your hands to check for leaks. When searching for leaks, use a piece of wood or cardboard.

Contact medical help immediately if any oil or fluid is injected into your skin. A serious infection or reaction can emerge without proper medical treatment.



BEWARE OF SUSPENDED LOADS

⚠WARNING Suspended loads may fall and cause severe personal injury or death.

If a hydraulic hose breaks from the boom of a crane/excavator, or the lifting support fails, the boom and/or load can fall instantly.

Do not enter area under or around a suspended load.



KEEP PERSONNEL AWAY FROM MOVING PARTS

⚠ WARNING Crushing hazard.

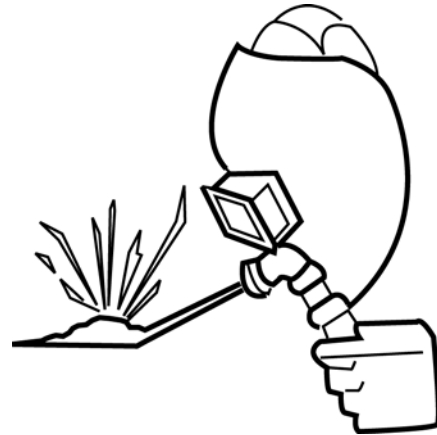
Keep personnel away from inside of GBM when jacking or moving GBM. Failure to do so could result in serious personal injury or death.



UNAUTHORIZED WELDING

⚠ WARNING Unauthorized welding can cause structural failure resulting in possible injury or death.

Do not weld on any structural member. Unauthorized welding or repair will void the warranty.



HANDLING AUGER CASINGS

⚠ WARNING Auger may fall out of casing and cause severe injury or death if casing tips or hits an obstruction.

Properly install safety chain assembly to augers and casings before lowering into or lifting out of shaft.

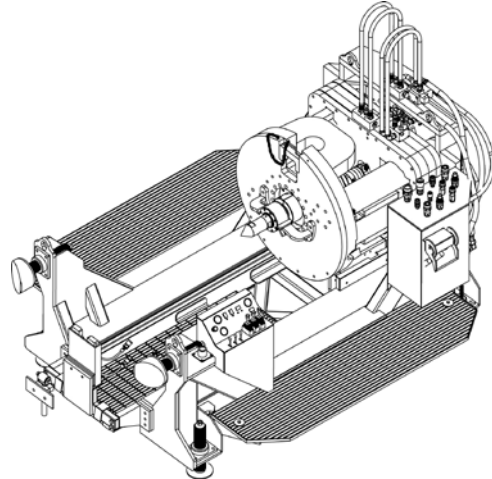
Do not stand or walk under a load.



REGULARLY CLEAN AND INSPECT EQUIPMENT

Remove any grease, oil, or debris buildup to avoid potential injury or equipment damage.

Inspect equipment for damage. If damaged, repair or replace immediately.



PRACTICE SAFE MAINTENANCE

⚠ WARNING Unexpected Jacking System movement may cause serious personal injury.

LOCKOUT power before performing any maintenance.

Shut down GBM before making repairs, adjustments, or removing obstructions.

Only trained and qualified personnel should perform maintenance or repairs.

Keep the area around the equipment clean and dry when performing maintenance.

Do not service the machine while it is in motion.

Replace worn or damaged parts. Remove grease, oil, or debris buildup.



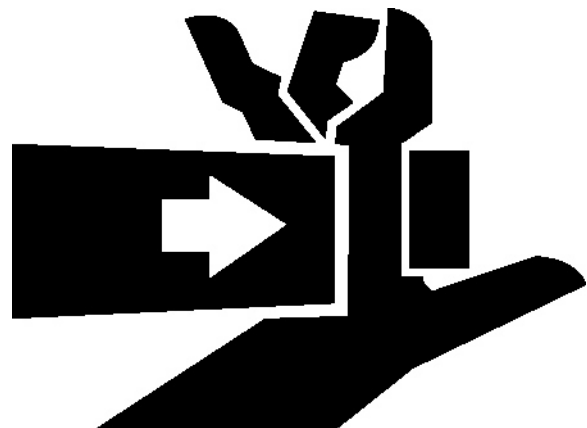
AVOID PINCH POINTS

⚠ WARNING Moving parts or the mishandling of parts can cause severe personal injury.

Keep hands away from moving parts.

Watch your fingers, hands, and legs while equipment is in operation.

Handle parts carefully to avoid crushing and pinch point hazards.



TEST SHAFT & TUNNEL VENTILATION

⚠ WARNING Keep shafts and tunnel well ventilated at all times.

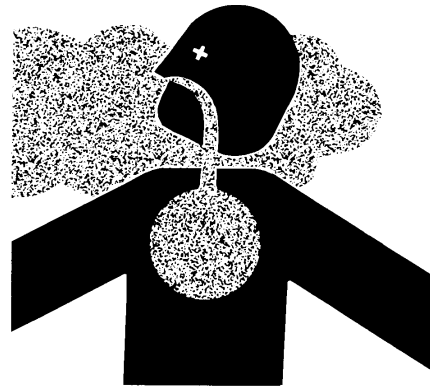
Use an approved air analyzer to detect hazardous gases and oxygen content.

Before and during the shaft operation, test for combustible and toxic gases and oxygen deficiency.

If the levels exceed OSHA prescribed levels, leave tunnel and shaft immediately! Do not activate or deactivate any electrical or hydraulic devices, since any sparks could cause an explosion.

Once ALL personnel are out of tunnel/shaft, cut power from power source.

Gases must be removed before reentering tunnel/shaft.



FIRE PREVENTION

⚠ CAUTION Fires can cause injury or property damage.

Keep equipment clean. Remove all debris from equipment.

Have a fire extinguisher available at all times. Keep the fire extinguisher fully charged.



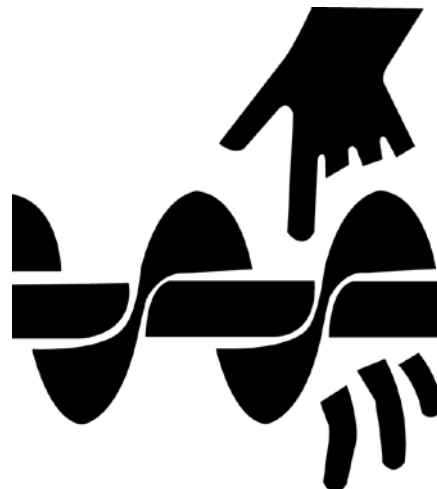
KEEP AWAY FROM AUGER

⚠ DANGER Contact with rotating auger will cause severe injury or death.

Keep hands, body, and objects clear of operating auger.

Do not operate without covers and guards in place.

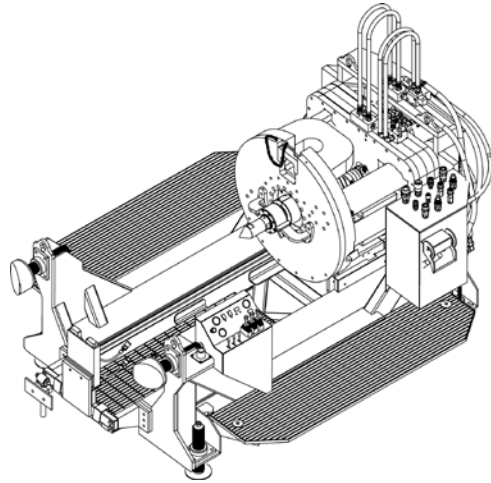
Lockout power before servicing.



HIGH PRESSURE HYDRAULICS

⚠ WARNING The GBM and Powered Reaming Head use high pressure hydraulics.

Keep all guards in place.



KEEP JOB SITE CLEAN AND ORGANIZED

⚠ WARNING Tripping can cause serious personal injury.

Be sure to keep job site clean and organized.



SLIPPERY WHEN WET

⚠ WARNING Slips and falls can cause serious personal injury.

Ensure firm footing in wet or slippery conditions.

Replace skid-resistant material if it is damaged or missing to prevent slips and falls.

Remove any buildup of grease, oil, or debris.



NO SMOKING IN TUNNEL

⚠ WARNING Smoking in tunnel could cause an explosion if combustible gases are present.

Do not smoke in tunnel.

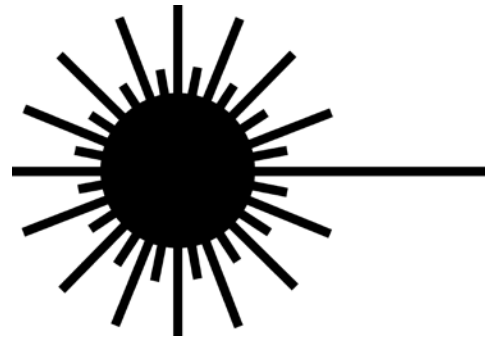


AVOID LASER LIGHT EXPOSURE

⚠ DANGER Staring into laser light will cause severe injury.

Do not stare into laser guidance system light beam. Avoid direct eye exposure.

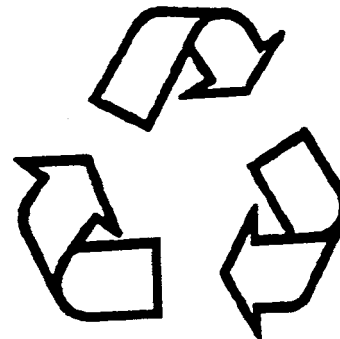
To avoid possible exposure to radiation in excess of acceptable emission limits, all repairs to laser must be performed by the original manufacturer or an authorized service technician.



RECYCLE WASTE

Follow local, state, federal, and international regulations when recycling or disposing of waste. Waste includes fluids/oil, fuel, filters, coolant, and batteries.

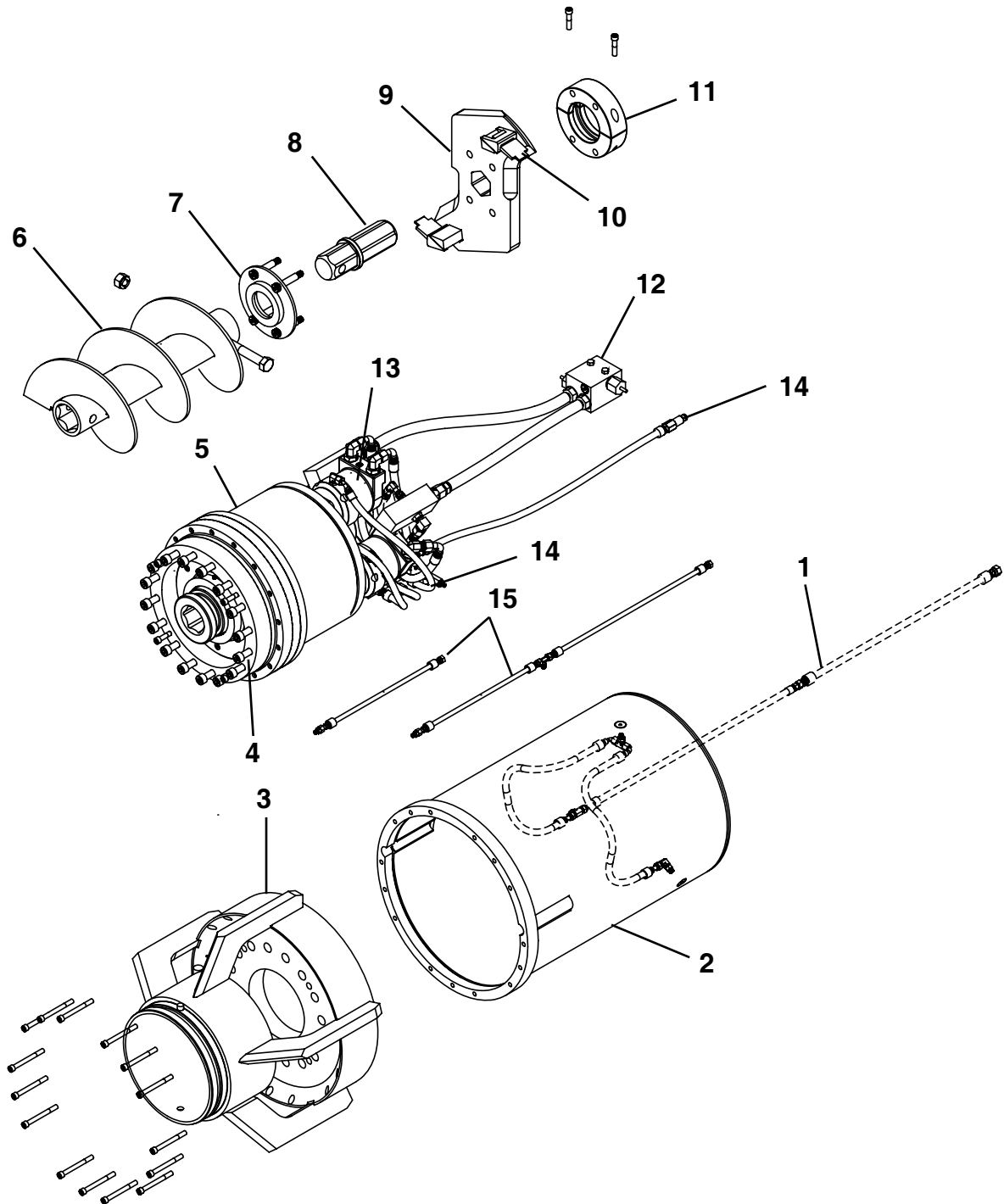
Use leakproof containers when draining fluids/oil. Do not pour waste on the ground, down a drain, or into any water source.



NOTES

Terminology

POWERED REAMING HEAD DN400

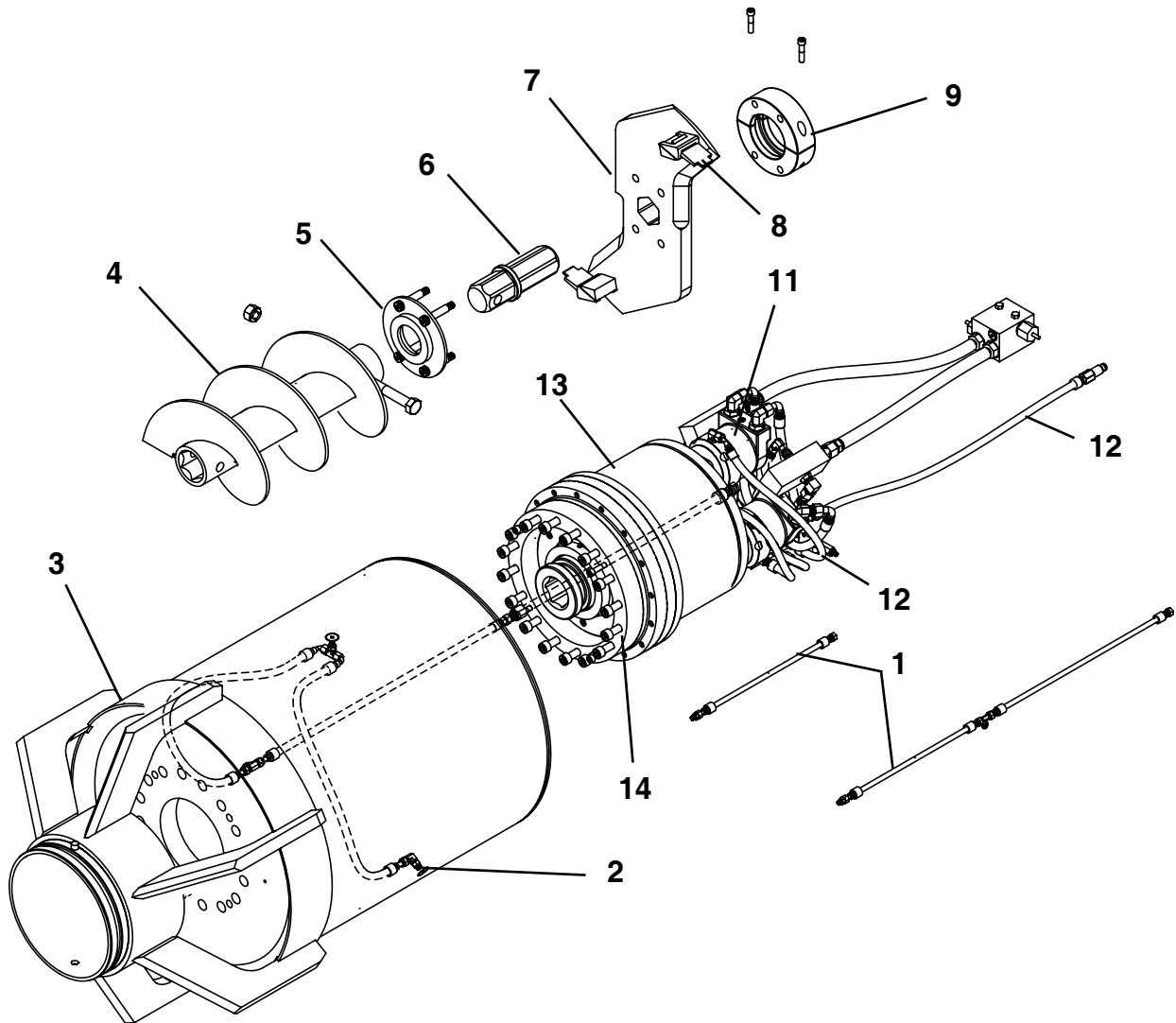


1. Lubrication Circuit
2. Can Assembly
3. Head Assembly
4. Gear Box Adapter
5. Gear Box

6. Lead Auger
7. Retainer Plate
8. Hex Coupler
9. Cutter Bit
10. Replaceable Teeth

11. Collar
12. Supply Lines
13. Hydraulic Auger Drive Motor (3)
14. Case Drain Hose
15. Jetting Circuit

POWERED REAMING HEAD DN600



- 1. Jetting Circuit
- 2. Lubrication Circuit
- 3. PRH Skin Housing Assembly
- 4. Lead Auger
- 5. Retainer Plate

- 6. Hex Coupler
- 7. Cutter Bit
- 8. Replaceable Teeth
- 9. Collar
- 10. Supply Lines

- 11. Hydraulic Auger Drive Motor (3)
- 12. Case Drain Hose
- 13. Gear Box Drive Assembly
- 14. Gear Box Adapter

Controls & Instruments

ROTATION PRESSURE SWITCH (GBM 4812A)

The rotation pressure switch (B) is used to control the pressure of the GBM frame auger drive rotation.

Select Low or High on the rotation pressure switch as follows:

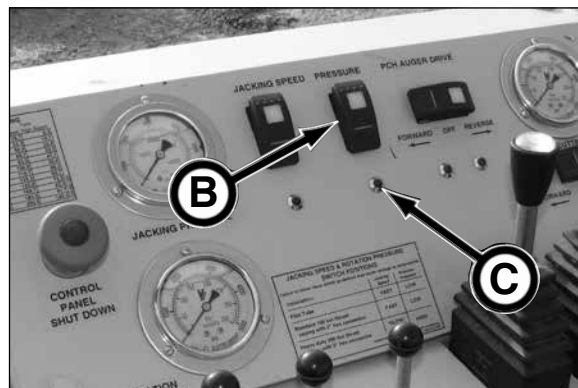
Low - 10,500 ft/lb torque (2,500 psi max)
Use for PRH with 2" hex connector, up to 100 ton maximum rated pipe, and soft ground conditions.

High - 20,000 ft/lb torque (5,000 psi max)
Use this switch with the Powered Reaming Head 20k drive only.

IMPORTANT: *When using the Powered Reaming Head with the 4812A and Power Pack, the power pack engine speed must be reduced to 1,500 rpm to limit the hydraulic flow. Using the PRH with a higher power pack engine speed will cause the augers to rotate too fast and possibly result in over excavation.*

NOTICE

The LED light (C) below the switch will illuminate indicating the function is in operation.



JACKING SPEED SWITCH (GBM 4812A)

The jacking speed switch (A) controls the advance speed of the thrust cylinders.

Select Slow or Fast on the jacking speed control as follows:

Fast - 100 ton
Use for PRH with 2" hex connector, up to 100 ton maximum rated pipe, and soft ground conditions.

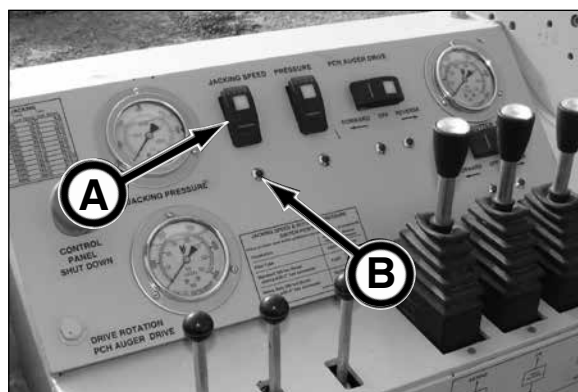
Slow - 200 ton
Use this switch with the 16" HD casings and the 20k drive Powered Reaming Head only.

NOTICE

The thrust cylinder retraction speed is not affected by the Slow/Fast switch. The Slow/Fast switch controls the advance speed.

NOTICE

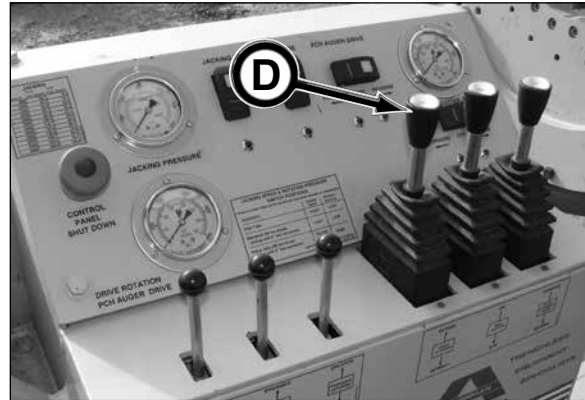
The LED light (B) below the switch will illuminate indicating the function is in operation.



THRUST CYLINDER CONTROL (GBM 4812A)

Use the thrust cylinder control (D) to extend and retract the frame thrust cylinders.

- Extend Cylinders - Push lever Forward
- Retract Cylinders - Pull lever Back



PRH - AUGER CONTROL (GBM 4812A)

The auger control (B) is used to rotate the powered reaming head auger.

Always rotate the PRH auger in the reverse or counter-clockwise (CCW) direction. This will move the spoils to the reception shaft.

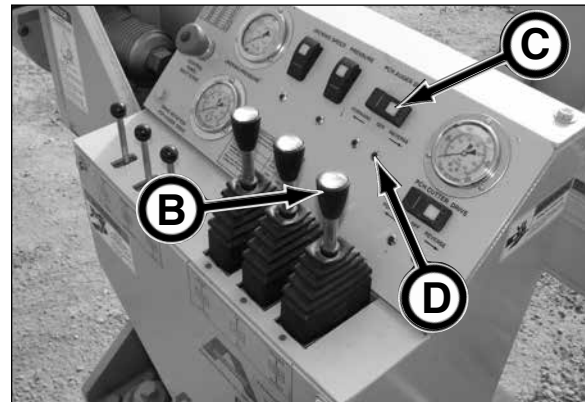
NOTICE Rotating the PRH auger in the wrong direction may damage equipment from spoils building up in the mixing chamber.

Forward (counterclockwise rotation) - Push lever Forward

Reverse (clockwise rotation) - Pull lever Back

There is also an electric/hydraulic rotation switch (C) to control the rotation of the PRH auger. Selecting Forward or Reverse will rotate the PRH auger at full speed without the need to operate the manually-operated hydraulic control (B).

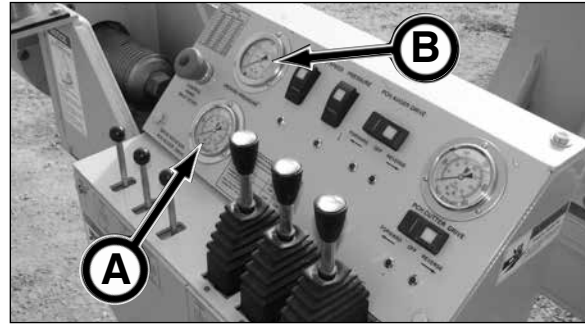
NOTICE The LED light (D) below the switch will illuminate indicating the function is in operation.



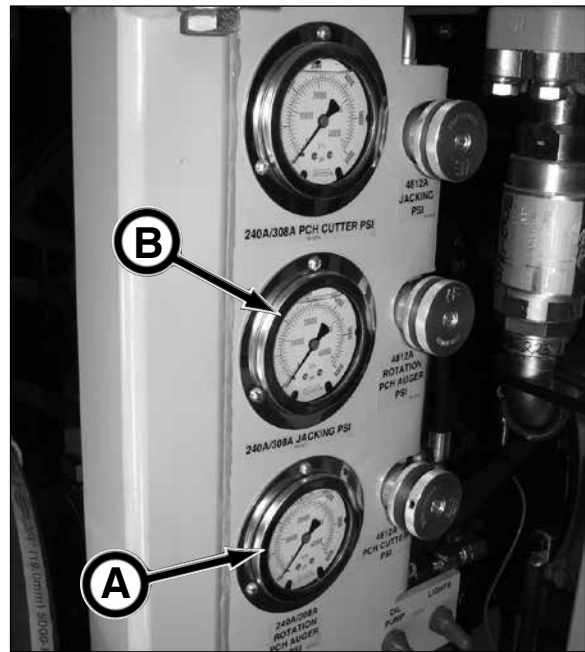
HYDRAULIC PRESSURE GAUGES

Use the pressure gauges to monitor the PRH auger rotation (A) and jacking thrust (B) pressure.

Operating range is up to 4,000 psi (27.579 mPa).
Maximum pressure is 5,000 psi (34.474 mPa).



GBM 4812A Frame



PI50Q Power Pack

NOTES

Assembly

Use this section to properly assemble the Powered Reaming Head drive assembly to the PRH skin housing assemblies.

PREPARING DRIVE ASSEMBLY FOR PRH HOUSING INSTALLATION

⚠ WARNING Suspended loads may fall and cause severe personal injury or death. DO NOT enter area under or around a suspended load.

⚠ WARNING Assemblies are heavy! Use proper lifting devices and equipment including personal protective equipment while handling assemblies.

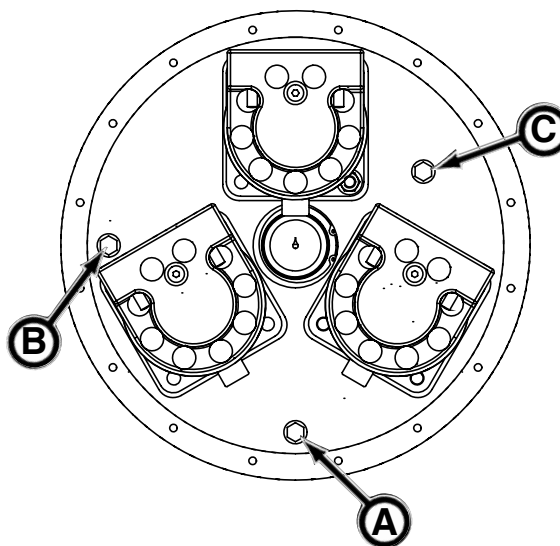


1. Before assembling the drive assembly and the bearing assembly to the PRH skin housing assembly, maintenance must be performed on the assemblies as follows:

A. Check gear box oil level:

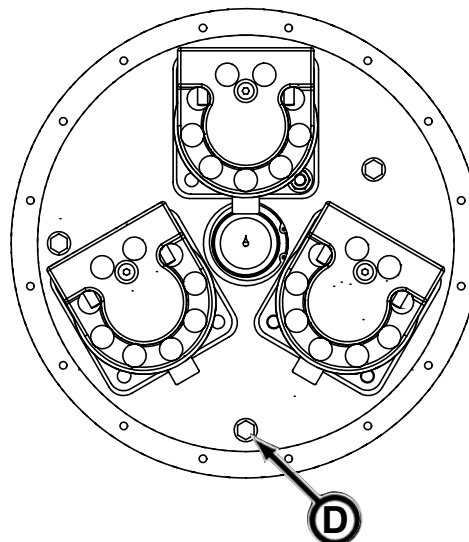
- Be sure the gearbox positioned as shown with the drain port (A) in the 6 o'clock position and the check port (B) in the 9 o'clock position. Be sure to allow a few minutes for the oil to settle before checking oil level. Clean area around check plug and remove check plug. Visibly check if oil is at port level. If oil is not visible at port level, clean area around fill plug (C). Remove fill plug and add Mobil SHC™ 630 Synthetic Bearing and Gear oil or equivalent until oil is at check port. Replace fill and check plugs.

Replace gear box oil every 2,000 feet (610 m).



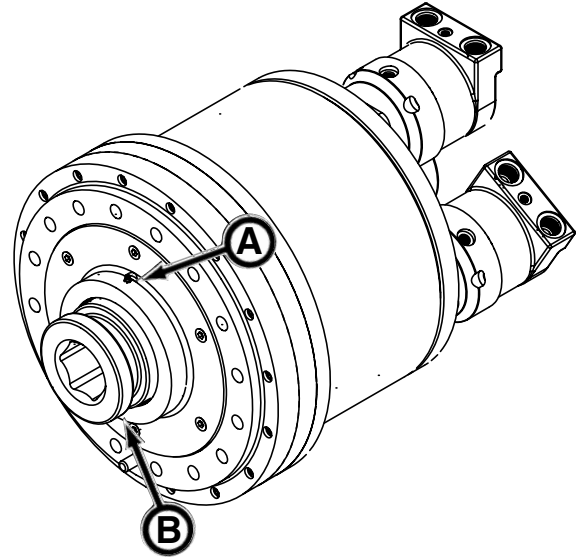
B. Check gear box for water:

- Clean area around drain plug (D). Loosen drain plug to check for water. If water is visible, the gear box seals have failed. In this case the gear box must be drained and flushed, seals replaced and the gear box filled with fresh, clean Mobil SHC™ 630 Synthetic Bearing and Gear oil.



C. Purge bearing assembly lip seals:

- Remove one of the bearing grease plugs (retain plug) and install grease fitting (A). Mount a grease gun equipped with Mobilgrease® XHP222 grease or equivalent to grease fitting. Lubricate until clean grease is visible on front face of bearing assembly. Rotate bearing and lubricate again until clean grease is visible on front face. Remove grease fitting. Install teflon tape on grease plug and replace plug into port. Repeat purging procedure with the other grease port (B). Once complete be sure both grease fittings are removed and replaced with plugs.



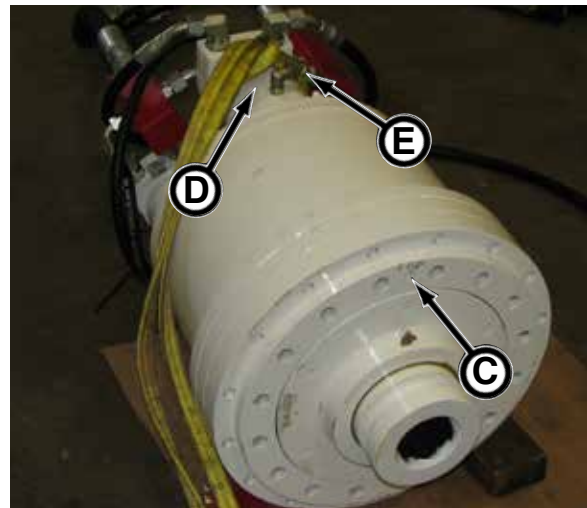
D. Visually check gear box for oil leakage and dirt buildup:

- Visually check gear box for oil leakage or excessive dirt. Clean any dirt from housing. If oil leakage is visible, the dirt and oil bearing seals must be replaced. Contact your Akkerman Aftermarket Support representative for more information. If seal replacement is required, keep in mind that the seal orientation is critical. Therefore be sure to replace seals in the exact orientation of the seals being removed.



2. Before installing the PRH gear box drive assembly into the skin housing assembly, it is important to note the orientation of the assemblies.

- Drive Assembly
 - Dowel Pin Location 12 o'clock (top) (C)
 - Gear Box Motor (D) and case drain hose (E) at top position.



(continued on next page)

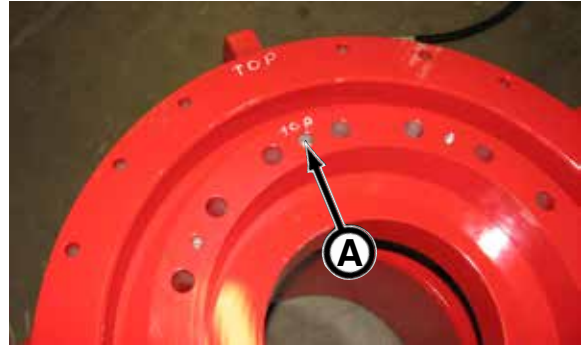
Assembly - Preparing Drive Assembly For PRH Housing Installation

Assembly Orientation (continued)

- DN400 Head & Can Assembly

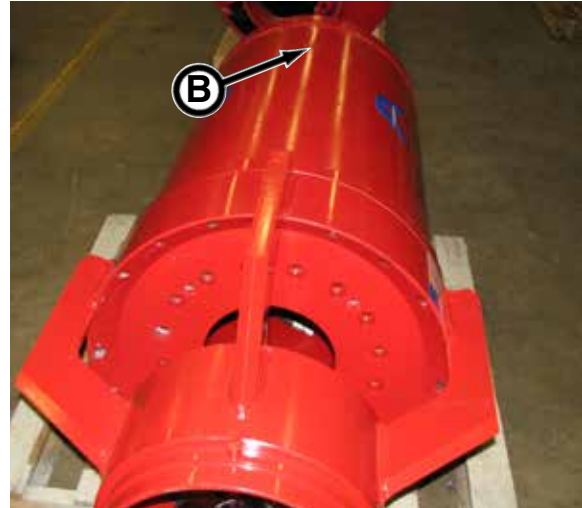
Head Assembly

- Dowel Pin Location 12 o'clock (top) (A)



Can Assembly

- Lubrication Port 12 o'clock position (B)

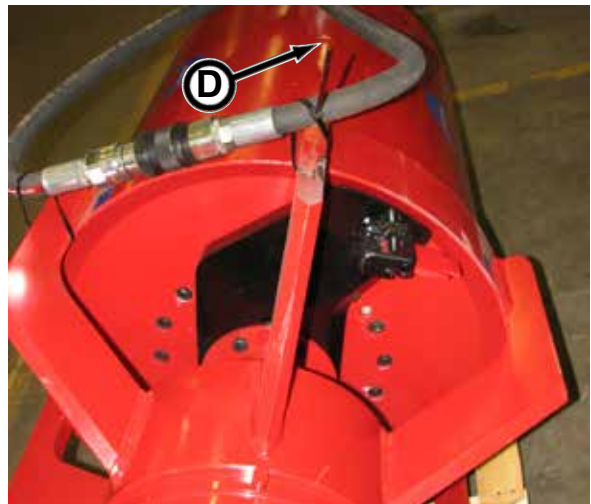


- DN600 Skin Housing Assembly

- Dowel Pin Location 12 o'clock (top) (C)

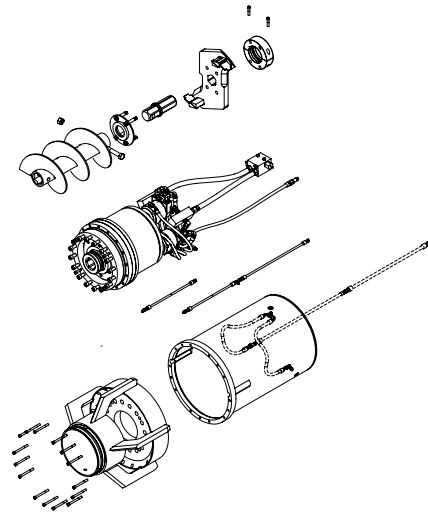


- Lubrication Port 12 o'clock position (D)

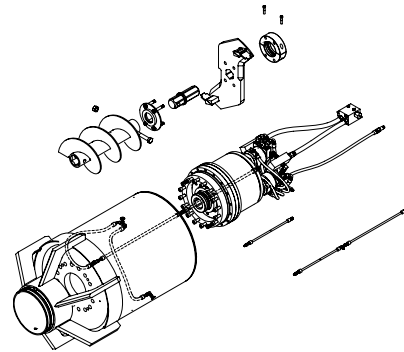


3. INSTALLING THE GEAR BOX DRIVE ASSEMBLY INTO SKIN HOUSING ASSEMBLY

- If assembling the DN400, proceed to DN400 Skin Housing To Drive Assembly in this section.



- If assembling the DN600, proceed to DN600 Skin Housing To Drive Assembly in this section.



INSTALLING DN400 SKIN HOUSING TO DRIVE ASSEMBLY

⚠ WARNING Suspended loads may fall and cause severe personal injury or death. DO NOT enter area under or around a suspended load.

⚠ WARNING Assemblies are heavy! Use proper lifting devices and equipment including personal protective equipment while handling assemblies.



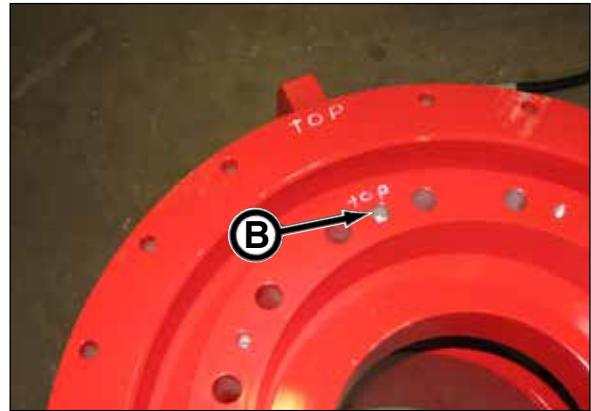
1. Place the head assembly (A) on its front end.



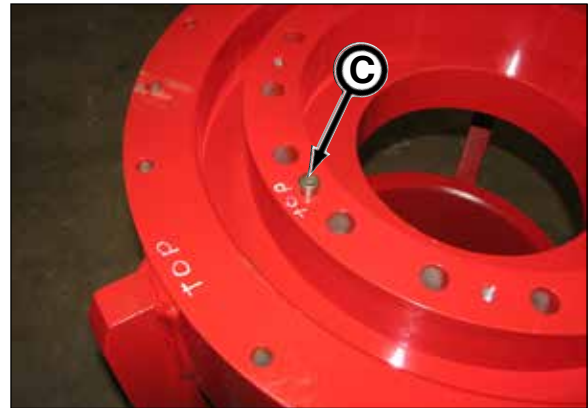
- Secure gear box adapter (A) to head assembly with four 1/2 UNC x 2.5 socket head cap screws and tighten to 120 ft-lb (163 N·m) torque (lubricated).

NOTICE

Be sure to properly align the head assembly with the gear box assembly. The head assembly top dead center position is with the dowel pin hole (B) at the 12 o'clock position.



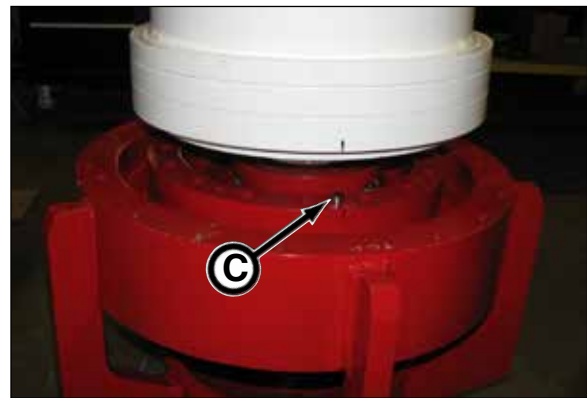
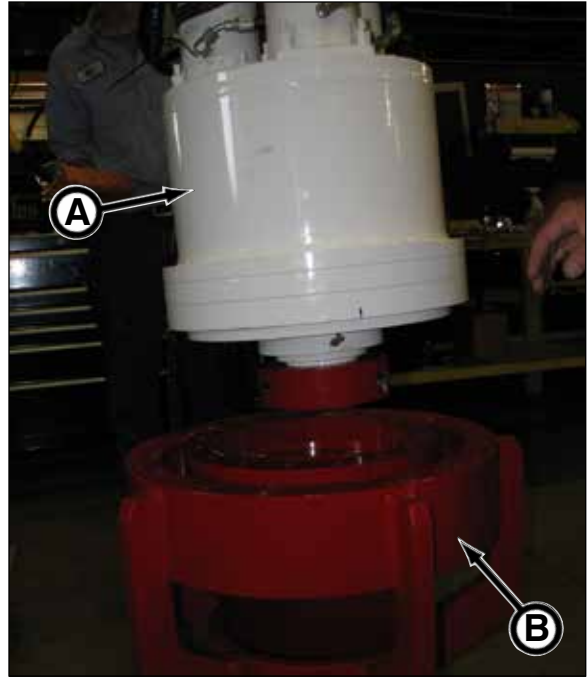
- Install dowel pin (C) in gear box adapter.



- Secure collar (D) to gear box shaft.



5. Carefully lower gear box assembly (A) onto head assembly (B). Be sure to properly align dowel pin (C) with gear box.



6. Secure gear box assembly to head assembly with sixteen 3/4 UNC x 7 socket head cap screws and tighten to 310 ft-lb (420 N·m) torque (lubricated).



7. With can assembly properly attached to lifting device, lift can assembly and carefully route gear box hydraulic hoses through can.



8. Slowly lower can onto gear box assembly/head assembly.

NOTICE

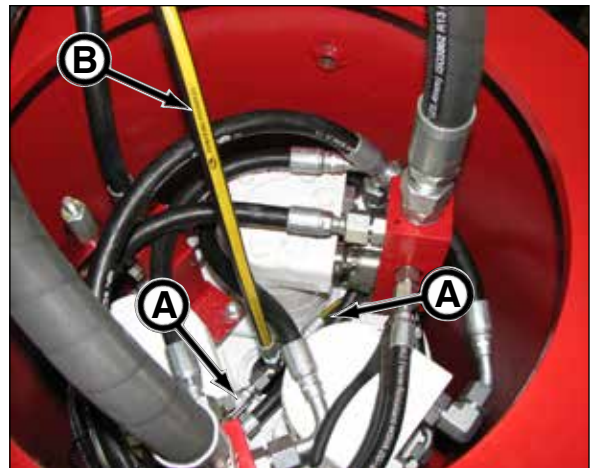
While lowering can, be sure to properly orient can with top position and jetting hoses. Pull hoses as needed to avoid pinching during assembly. Lubrication port must be on top dead center position.



9. Secure head assembly to can assembly with fifteen 1/2 UNC x 4 socket head cap screws and tighten to 93 ft-lb (126 N·m) torque (lubricated).



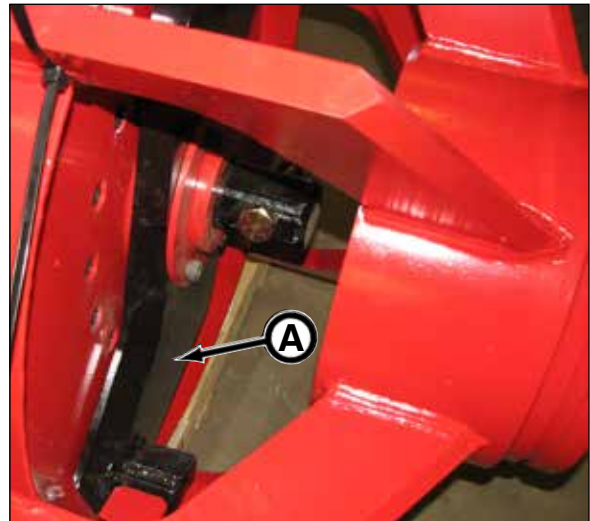
10. Install can jetting hoses (A) to jetting hose with tee (B).



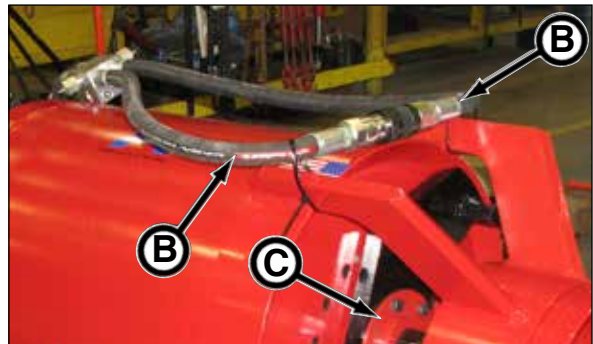
11. Lower PRH assembly to ground level.



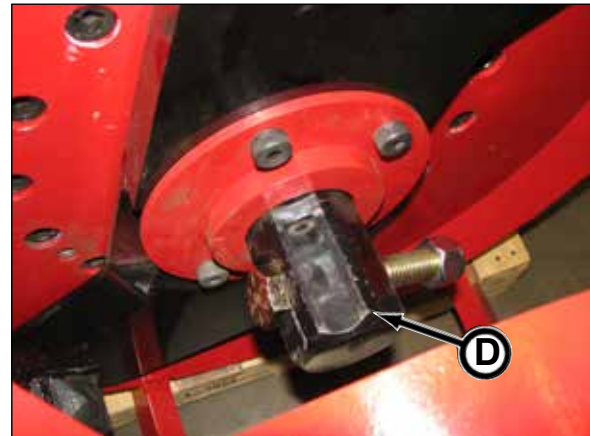
12. Mount cutter bit (A) to gear box shaft.



13. Connect 1" pressure lines (B) together so as to spin cutter bit and align holes in cutter bit to holes in retainer plate.



14. Install hex coupler (D) into gear box with one inch hole facing out. Install retainer plate with four 3/4 x 3 socket head shoulder bolts and tighten to 175 ft-lb (240 N·m) torque (lubricated).



15. The powered reaming head is now ready for use.

INSTALLING DN600 SKIN HOUSING TO DRIVE ASSEMBLY

⚠ WARNING Suspended loads may fall and cause severe personal injury or death. DO NOT enter area under or around a suspended load.

⚠ WARNING Assemblies are heavy! Use proper lifting devices and equipment including personal protective equipment while handling assemblies.

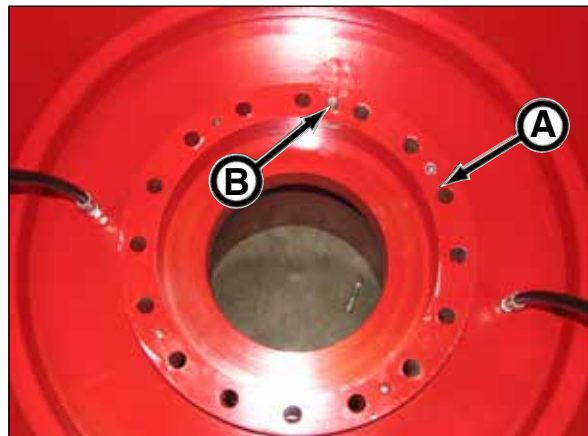


1. Place the head can assembly on its front end.

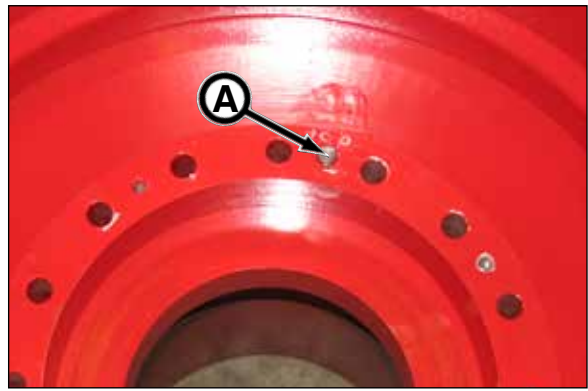


2. Secure gear box adapter (A) to head can assembly with four 1/2 UNC x 2.5 socket head cap screws and tighten to 120 ft-lb (163 N·m) torque (lubricated).

NOTICE Be sure to properly align the head can assembly with the gear box assembly. The head assembly top dead center position is with the dowel pin hole (B) at the 12 o'clock position.



3. Install dowel pin (A) in gear box adapter.



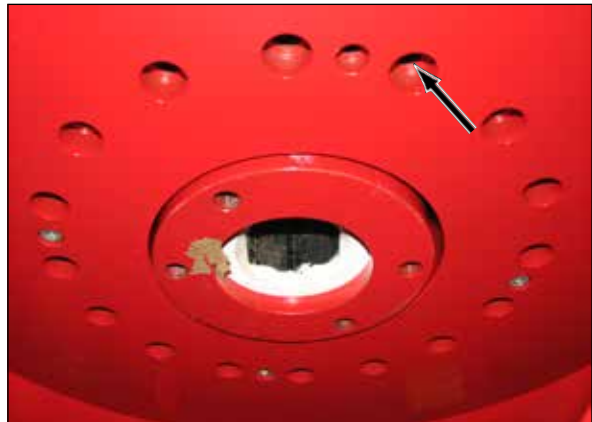
4. Secure collar (B) to gear box shaft.



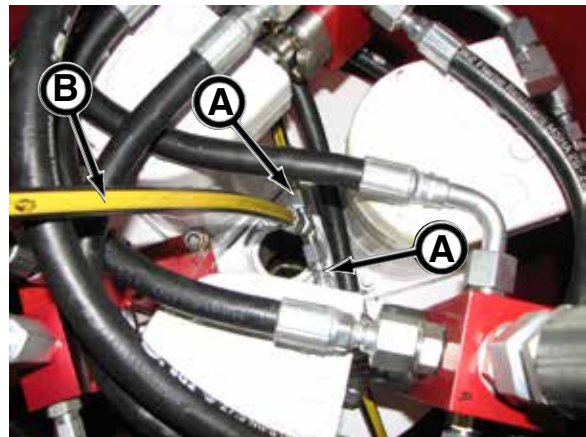
5. Carefully lower gear box assembly onto head can assembly. Be sure to properly align dowel pin with gear box.



- Secure gear box assembly to head can assembly with sixteen 3/4 UNC x 7 socket head cap screws and tighten to 310 ft-lb (420 N·m) torque (lubricated).



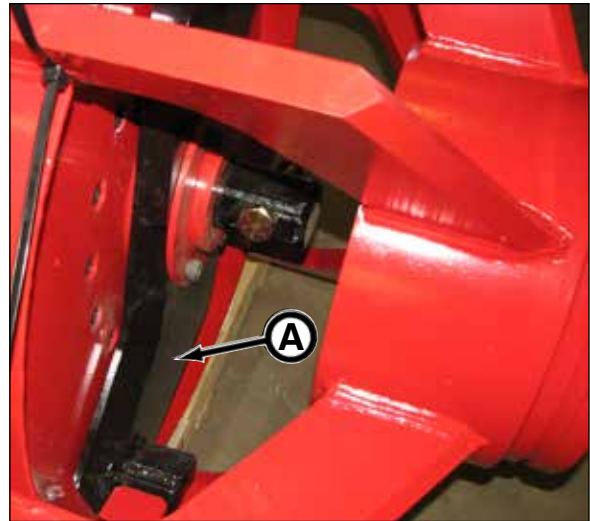
- Install can jetting hoses (A) to jetting hose with tee (B).



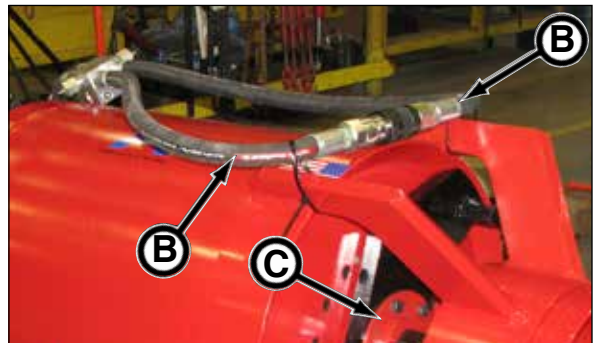
- Lower PRH assembly to its side.



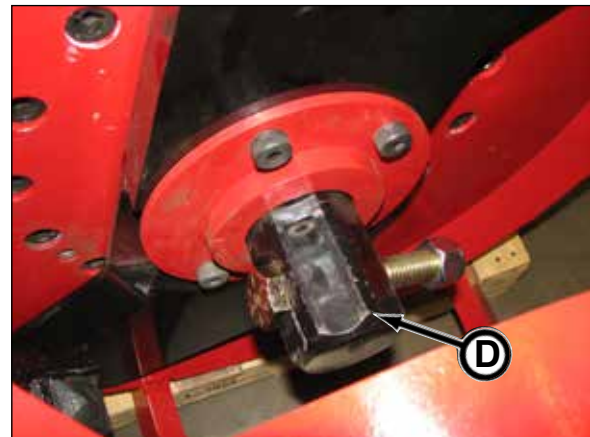
9. Mount cutter bit (A) to gear box shaft.



10. Connect 1" pressure lines (B) together so as to spin cutter bit and align holes in cutter bit to holes in retainer plate.



11. Install hex coupler (D) into gear box with one inch hole facing out. Install retaining plate with four 3/4 x 3 socket head shoulder bolts and tighten to 175 ft-lb (240 N·m) torque.



12. The powered reaming head is now ready for use.

Operation

OPERATING GUIDELINES

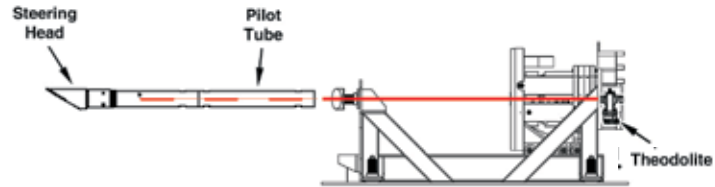
⚠ WARNING Do not operate this equipment until you read, study, and understand this manual AND your GBM Operator's Manual. Failure to do so, could result in severe personal injury or death.

1. Before operating, read and understand the Safety, Pre-Start Inspection, and Operation sections.
2. Do not operate this equipment while under the influence of alcohol, drugs, or medication.
3. Follow all Federal, State, and Local safety regulations and procedures.
4. Be sure OSHA prescribed safety personal protective equipment is being worn by all personnel.
5. Be sure the area is safe for operation. Keep work site clean and organized.
6. NEVER operate equipment if it has been engulfed with water. Contact your Akkerman Aftermarket Support representative for proper procedures on how to restore equipment for operation.
7. Have a fully charged fire extinguisher on the job site at all times.
8. Before operating, repair all equipment problems.
9. Be sure the excavated launch and reception pits or shafts are properly shored or braced to prevent slides or cave-ins.
10. Test air monitoring and ventilation detectors for proper operation. Never enter a tunnel without gas detectors.
11. A fully trained and qualified signal person must direct the excavator or crane operator when lifting and lowering equipment into the launch or reception pits.
12. Never walk or work under any part of the excavator or crane and suspended loads.
13. Operate jacking system at lowest pressure possible to prevent excessive heat build up.
14. Test all controls to make sure they work properly.
15. Pressure peaks cause hoses to jump without notice. Keep all personnel away from hoses during operation of equipment.
16. Lock out electrical power at the source (generator) before performing any maintenance.
17. Beware of pinch points.
18. If this manual is lost, contact your Akkerman Aftermarket Support Representative for a new manual or download this manual from the Akkerman web site at www.akkerman.com.
19. High pressure hydraulics are used on the GBM. Be sure all covers and guards are in place before operating.
20. Do not make any modifications to any Akkerman products. Doing so could cause structural failure and will void the warranty.
21. Do not make adjustments or repairs to the hydraulic system components while in operation or until all pressure is released and power pack is locked out, tagged out.
22. Be sure all suction valves are open and valve handles tie strapped to prevent accidental closure.

POWERED REAMING HEAD INSTALLATION PROCESS

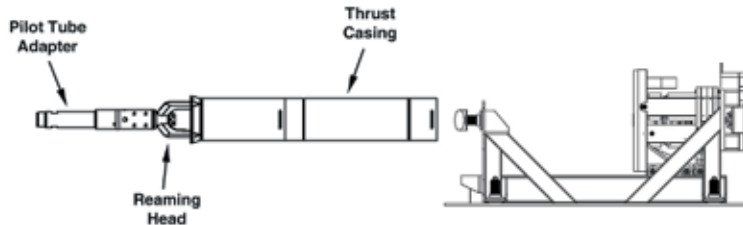
Step 1: PRECISE INSTALLATION OF PILOT TUBES

The first step is the installation of the pilot tube on line and grade.



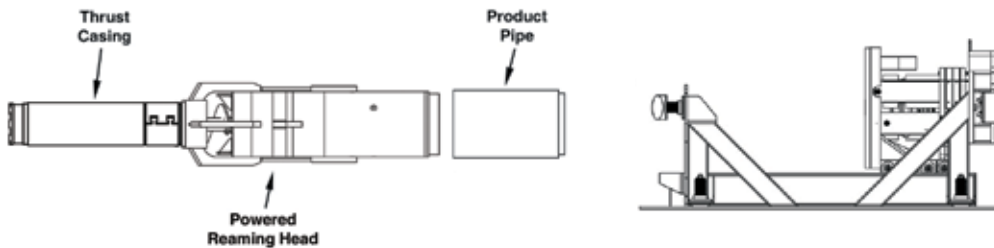
Step 2: ADVANCING THRUST CASINGS ALONG PILOT TUBE PATH

The second step is to follow the pilot tube with a reaming head or other upsizing tool and standard 11" OD thrust casings.



Step 3: INSTALLATION OF PRODUCT PIPE WITH POWERED REAMING HEAD

In the third step, the powered reaming head follows the thrust casings to increase the bore to match the product pipe diameter.



USING THE POWERED REAMING HEAD WITH 20K DRIVE

Contractors installing pipe in diameters larger than 16 in. (406 mm) outside diameter now have a more productive choice in their pipeline installation when using the Guided Boring Method; the powered reaming head (PRH).



The powered reaming head proceeds as a three step method; first the pilot tubes are installed by using the Akkerman Guided Boring Machine frame and guidance system. Second, the bore diameter is increased to approximately 16 in. (406 mm) by installing temporary casings and augers. The third step is accomplished by installing the powered reaming head behind the temporary casings and reversing the auger flow direction toward the reception shaft.

After the powered reaming head is connected to the hydraulic supply of the power unit, it is thrust into the soils and its rotating auger excavates the soil to the final diameter needed for the product pipe. The spoils are then transported through the temporary casings to the reception shaft and new pipe sections are added in the launch shaft as needed. When the powered cutter head reaches the reception shaft the hydraulic supply hoses are disconnected and removed from within the pipeline. The head is then lifted from the reception shaft signaling the completion of the bore.

To install the powered reaming head refer to the following detailed information:

- | | |
|-------------|---|
| 4-3 | Use Jetting & Pipe Lubrication With Powered Reaming Head |
| 4-5 | Installing Powered Reaming Head |
| 4-17 | Removing Powered Reaming Head From Reception Shaft |

USE JETTING & PIPE LUBRICATION WITH POWERED REAMING HEAD

When using the Akkerman Powered Reaming Head (PRH), the contractor must plan for jetting, whether or not it is needed for the project. If a “change of conditions” occurs, and the PRH is not plumbed for jetting or is not being used, in many instances, the PRH will become plugged. In addition to using jetting with the PRH, lubricating the product pipe should also be used to reduce jacking pressure.

What is Jetting?

- Jetting consists of water or a water / polymer mixture. Baroid’s EZ MUD®, a water soluble polymer or equivalent can be used. Ask your polymer supplier for the proper jetting mixture based on the Geotech report for your project.

Why use Jetting?

- The two jetting nozzles (A) on the PRH reduces head torque requirements by lubricating the metal parts along with the spoils to reduce or eliminate the clogging of the head.
- Torque of the auger drive is also reduced since the material flows more freely due to less friction on the metal parts.



Two Jetting Ports

Jetting Supply Requirements

The jetting supply should pump a minimum of 5 gpm @ 1,000 psi (19 lpm @ 6,895 kPa) and a maximum of 7 gpm @ 1,500 psi (26.5 lpm @ 10.342 mPa). The maximum operating pressure is 2,500 psi (17.24 mPa).

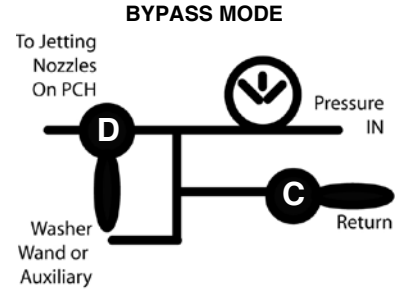
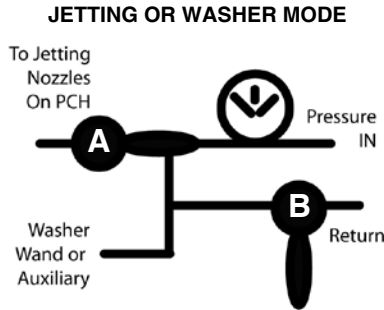
Jetting Hookup

Install PRH jetting hose to jetting supply source. Install additional supply hoses as needed.

(continued on next page)

Using Jetting

- With jetting properly installed on PRH and jetting supply pump, turn valve (A) to ON position for jetting and turn return valve (B) to OFF position.
- The amount of jetting depends on ground conditions. If your spoils consist of a slurry substance, the amount of jetting should be reduced.
- Only use jetting when advancing pipe to prevent over excavating.
- When shutting down the jetting, be sure to turn return valve (C) to ON position, and then turn jetting valve (D) to OFF position to prevent pressure buildup in jetting hose.



Lubricating Product Pipe

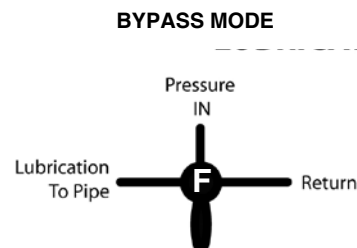
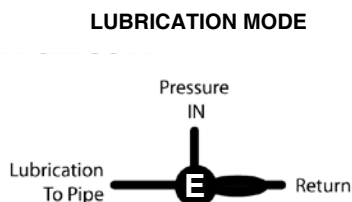
- Lubricating the product pipe around the outside of the pipe has proven to be very effective in reducing the friction between the product pipe and the soil that surrounds it. This lubrication results in a significant decrease in thrust. There are three lubrication ports on the PRH.
- Lubrication type or mixture is based on soil conditions, consistency, clay, sand, etc. Your polymer supplier can help you with the proper lubrication mixture based on your Geotech report for the project.
- Install supply source to lubrication hose on PRH.
- Refer to your Lubrication Pump specifications for the maximum operating pressure rating.



Three Lubrication Ports

Using Pipe Lubrication

- With lubrication hose properly installed to PRH and lubrication supply pump, turn valve (E) to ON position for lubrication.
- Only lubricate while advancing pipe to prevent the lubricant from flowing into launch shaft or into the cutter face causing plugging, resulting in decreased productivity.
- When shutting down the lubrication, be sure to turn valve (F) to OFF position to prevent pressure buildup in lubrication hose.
- The amount of lubrication depends on ground conditions. Contact your polymer supplier.



INSTALLING POWERED REAMING HEAD

NOTICE

When using the Powered Reaming Head (PRH), the contractor **MUST** plan for jetting and lubrication, whether or not it is needed for the project. If a “change of conditions” occurs, and the PRH is not plumbed for jetting/lubrication or is not being used, in many instances, the PRH will become plugged. The use of jetting and lubrication helps reduce jacking pressures. For more information, refer to Using Powered Reaming Head Jetting & Lubrication in this section. Akkerman highly recommends to always use jetting and lubrication on a PRH drive.

NOTICE

As the reaming head and casings are advanced into the reception shaft, the reaming head assembly and casings must be supported to maintain alignment. Failure to do so will deteriorate the bottom of the bore hole resulting in poor grade alignment.

1. Once the reaming head assembly is in the reception shaft, remove the reaming head auger by removing the casing clips (not shown) and then the auger bolt and nut that was installed in the launch shaft (back bolt as shown). Replace auger into the reaming head assembly casing.



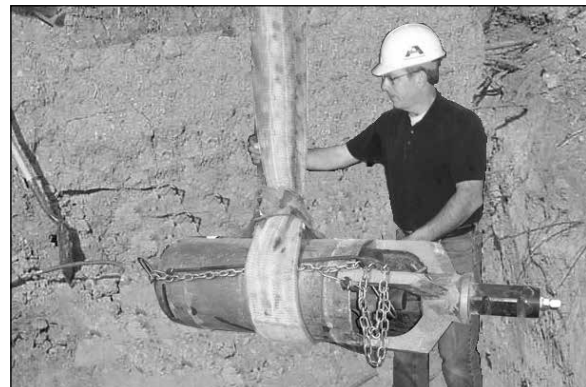
⚠ WARNING

Suspended loads may fall and cause severe personal injury or death. Do not stand or walk under a load.

⚠ WARNING

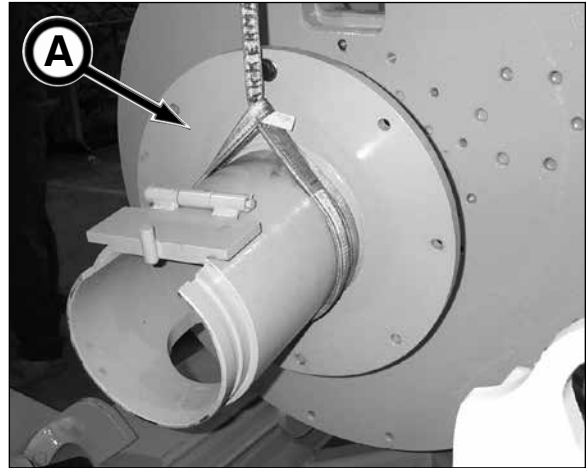
Auger may fall out of casing and cause severe injury or death if reaming head assembly tips or hits an obstruction.

2. Install safety chain assembly or auger pin to auger to secure auger into reaming head assembly. For proper installation of safety chain, refer to Installing Safety Chain Assembly/ Casing Auger Pin To Auger & Casing in this section.
3. Remove the reaming head assembly from reception shaft.



(continued on next page)

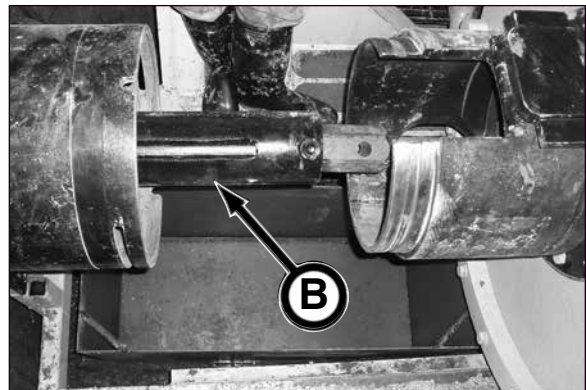
4. Remove casing thrust adapter (A) from the GBM frame.



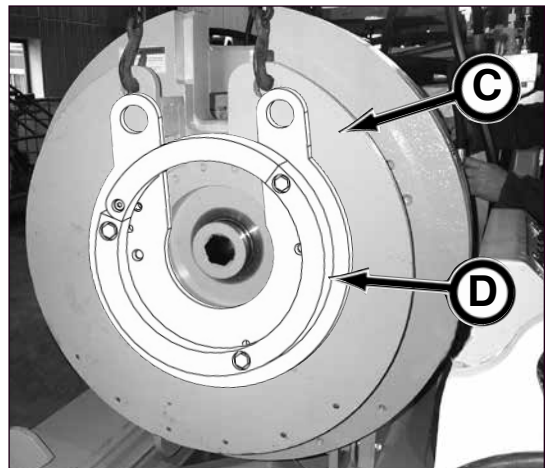
5. Remove dirt bucket.



6. Remove auger drive adapter (B).



7. Install thrust plate extension (C) to thrust plate with eight 3/4-10 x 2 in. bolts and flat washers.
8. Install pipe thrust adapter (D) to plate extension with 3/4-10 x 3 in bolts and flat washers.



(continued on next page)

9. INSTALLING PRH INTO LAUNCH SHAFT:

A. Install PRH auger drive, case drain, jetting and lubrication hoses:

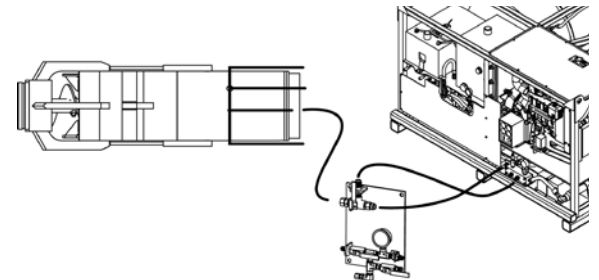
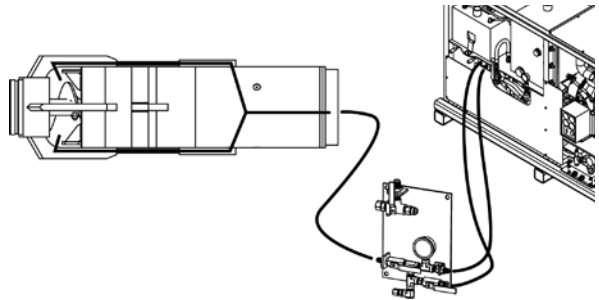
Route all hoses through several pipe (5-8 depending on room as follows:

a. connect two 100' 3/4 hoses (A) from PRH through pipe to the two 1" multi-port quick disconnect hoses (B) on the GBM.

b. one 3/8" case drain hose from PRH through pipe to the case drain connection (C) on GBM.

c. four 25' 3/8" jetting hoses (to match length of PRH hoses) from PRH through pipe to the jetting connection on jetting and lubrication pump shaft control.

d. four 25' 3/8" lubrication hoses (to match length of PRH hoses) from PRH through pipe to the lubrication connection on jetting and lubrication pump shaft control.



B. Lower complete PRH into launch shaft. Be careful not to damage or pinch PRH hoses. Route hoses through opening in thrust plate.

C. Align and install PRH lead auger to last casing auger with one 3/4 x 4 in. bolt and nylock lock nut. Tighten the nut so the end of the nut is flush with the end of the bolt. Do not overtighten.



(continued on next page)

D. Advance the PRH to the last casing and align with alignment guides (A) in the 12 o'clock and 6 o'clock positions.

E. Install four casing joint keepers (B) at 2 o'clock, 4 o'clock, 8 o'clock and 10 o'clock positions to lock front casing to PRH.

F. Proceed to step 10 to advance the PRH.

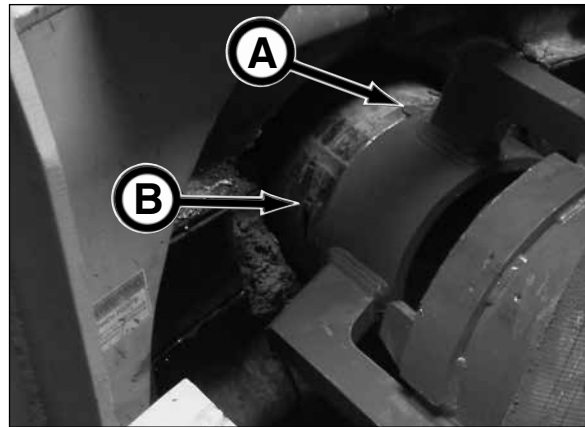


Photo Used As Reference

10. Advance thrust block so the bell end of the PRH is aligned and flush with PRH thrust plate on GBM frame.

11. Disconnect nylon strap from PRH and remove from launch shaft.

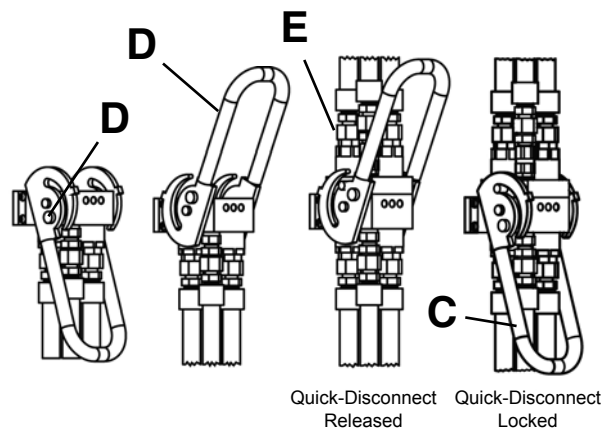


Photo Used As Reference

12. When the reception shaft personnel state it is clear to proceed with advancement, move multi-port quick disconnect handle DOWN (C) until release button (D) pops out. Multi-port quick disconnect is now locked into place.

WARNING Contact with rotating auger can result in serious injury. When installing next pipe or when removing casing and auger in reception shaft, release multi disconnect to disable the auger function. Lock multi-port quick disconnect **ONLY** after it has been communicated from the reception shaft that advancement can proceed.

NOTICE The multi-port quick-disconnect **MUST** be locked into place before augers will operate.

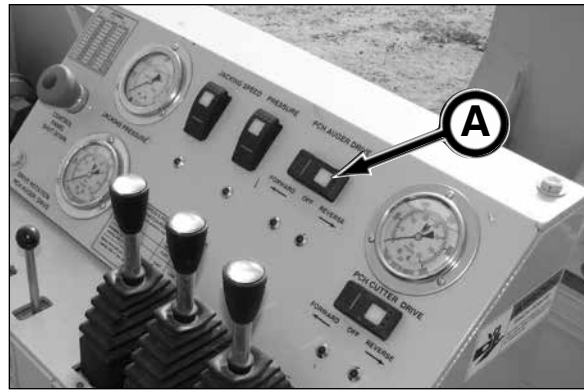


(continued on next page)

NOTICE

Before operating the auger, be sure the personnel in the launch and reception shafts are clear of any moving parts.

13. Rotate the auger counterclockwise with the auger drive rotation control (A) so the spoils are removed to reception shaft, and turn on jetting at supply source.



Using a communication device between the launch and reception shafts, contact the personnel in reception shaft to confirm that the auger is rotating in the counterclockwise direction and that the spoils are going into the reception shaft.



14. Start jacking the PRH by extending the GBM thrust cylinders using the thrust cylinder control while rotating the PRH auger drive.



(continued on next page)

Photo Used For Reference

15. While jacking the PRH, monitor the jacking thrust pressure with gauge (A) and the auger drive rotation pressure with gauge (B) to determine advance rate.

Normal operating pressure:

jacking - Up to 6,000 psi (Up to 41 mPa)

auger - 2,000 - 4,000 psi
(13.8 mPa - 27.5 mPa)

NOTICE

The maximum rotation system operating pressure is 5,000 psi (34.5 mPa). Your operation will stall when operating at 5,000 psi (34.5 mPa).

16. Advance PRH as far forward as possible so the PRH is supported by the bottom roller brackets. Turn off all power.
17. Release disconnect to disable the auger function by moving multi-port quick disconnect handle UP (C).

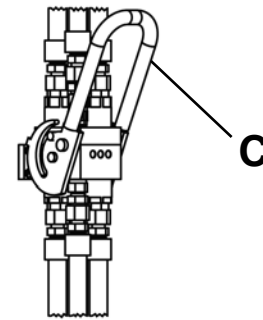
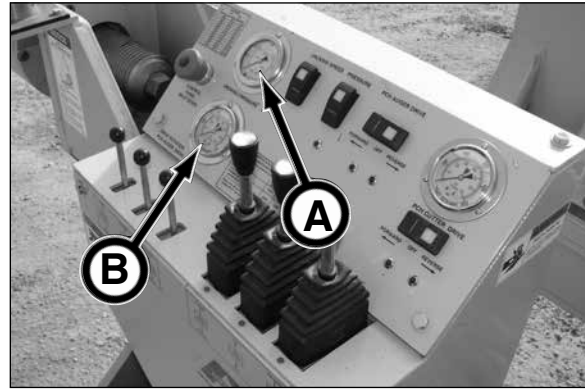
⚠ WARNING

When installing next pipe or when removing casing and auger in reception shaft, release multi-port quick disconnect to disable the auger function. Failure to do so could result in serious injury from contact with rotating auger. Lock or reconnect multi-port quick disconnect ONLY after it has been communicated from the reception shaft personnel that advancement can proceed.

18. With the addition of the PRH in the pipe line, a section of casing/auger must be removed in the reception shaft.
19. Using a hoist to keep the casing/auger in line with the pipeline, remove keepers from the casings.

NOTICE

Remove bottom keepers first, otherwise the weight of the casing and auger will make it difficult to remove the bottom keepers once the top keepers are removed.



Quick-Disconnect Released



(continued on next page)

20. Slide the casing out to gain access to the auger joint.



21. Disconnect the augers by removing the auger bolt and nut that was installed in the launch shaft (back bolt as shown).



⚠ WARNING Auger may fall out of casing and cause severe injury or death if casing tips or hits an obstruction. Properly install safety chain assembly or auger pin to augers and casings before lowering into or lifting out of shaft. Do not stand or walk under a load.

22. Slide the front auger into the lead casing. Secure auger to casing with safety chain assembly or auger pin.
23. Remove auger casing from reception shaft.
24. Continue removing auger casings until the powered reaming head reaches the reception shaft.



(continued on next page)

NOTICE

To protect your product pipe, you must be sure the product pipe rating can withstand the thrust pressure of the GBM. The factory setting is 6,000 psi (41.4 MPa). If your pipe is rated lower than 200 ton, the GBM thrust pressure in the P275T or P150Q Power Pack **MUST** be readjusted. Failure to do so will break the pipe. Refer to Operation section, subsection Power Pack Operation, Adjusting Thrust Pressure.

- 25. Retract GBM thrust block to provide enough room for the installation of the final product pipe.



⚠ WARNING

Suspended loads may fall and cause severe personal injury or death.

If a hydraulic hose breaks from the boom of a crane/excavator, or the lifting support fails, the boom and/or load can fall instantly.

Do not stand or walk under a suspended load.



- 26. Lower pipe into shaft. Pull hoses through pipe as pipe is being positioned on jacking frame.

NOTICE

Be sure to position hoses through pipe so spigot end of pipe goes into the pipeline first.

- 27. Route hoses through thrust plate. Be sure hoses will not be pinched.
- 28. Advance thrust plate to bell end of pipe. Be sure fiber ring is in pipe prior to jacking. Use caution during advancement so hydraulic hoses will not be pinched.



(continued on next page)

29. Push product pipe into pipeline by rotating PRH auger (CCW) drive and extending the thrust cylinders. Be sure to use jetting and lube during advancement of pipe.

NOTICE

To properly support the product pipe:

Clay or Hobas: snugly tighten the two lower roller brackets against pipe, and raise up or remove the top roller bracket. Point loading could damage pipe.

Steel Casing: readjust the three roller brackets and tighten snugly against product pipe.

WARNING

When installing next pipe or when removing casing and auger in reception shaft, release multi-port quick disconnect to disable the auger functions. Failure to do so could result in serious injury from contact with rotating auger. Lock or reconnect multi-port quick disconnect ONLY after it has been communicated from the reception shaft personnel that advancement can proceed.

30. Continue adding pipe and hoses as needed until the powered reaming head reaches the reception shaft. Be sure to connect the lube hose starting with pipe number three or four.



313. With the addition of each section of product pipe, a section of casing/auger must be removed from the reception shaft. Refer to steps 21 - 26 for removing casing/auger from reception shaft.

32. Once the powered reaming head is removed from the reception shaft (refer to Removing Powered Reaming Head From Reception Shaft, in this section), add product pipe as needed until the product pipe reaches the reception shaft per job requirement.



33. Proceed to Removing Powered Reaming Head From Reception Shaft in this section.

REMOVING POWERED REAMING HEAD FROM RECEPTION SHAFT

1. Communicate with the launch shaft personnel to advance PRH until product pipe is exposed.
2. Once the powered reaming head is supported disconnect the PRH from the product pipe and remove the hydraulic hoses, jetting hose and lube hose.



3. Pull hoses back to launch shaft.

IMPORTANT: DO NOT EXCEED MINIMUM BEND RADIUS OF HOSE. Doing so will damage hose.
Contact the hose manufacturer for the minimum hose bend radius measurement.



4. Remove PRH assembly from reception shaft.



5. Clean PRH to remove all dirt from cutter area and housing while the dirt is soft and flexible and before the dirt hardens to PRH.



Lubricants

NOTICE

Use of inferior lubricants can affect the efficient performance of your Akkerman equipment. Always use high quality lubricants as specified in this section.

GEAR BOX LUBRICANT

The powered reaming head gear box assembly (A) is filled with Mobil SHC 630 Synthetic Bearing and Gear Oil.

Use Mobil SHC 630 or equivalent when adding or changing lubricant.

NOTICE

The Mobil SHC 630 Synthetic Bearing and Gear oil is a synthetic oil specifically designed for this application. If you change to a different oil, use a reputable oil supplier to meet or exceed the Mobil SHC 630 oil specification. Do not mix oil manufacturers or grades.

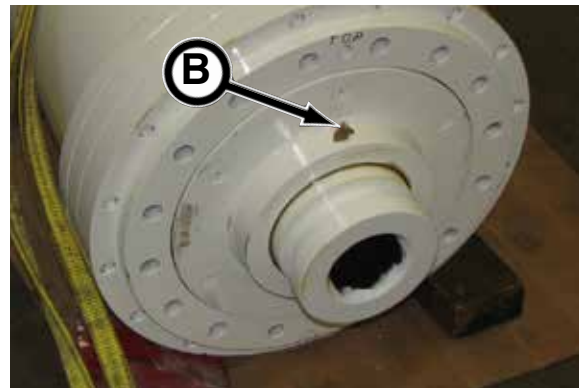


GEAR BOX ASSEMBLY LIP SEAL LUBRICANT

The gear box assembly lip seals (B) are greased with Mobilgrease® XHP222 Premium Lubricating Grease.

The XHP222 grease is a multi-purpose, high performance, high temperature, lithium grease.

Use Mobilgrease® XHP222 Premium Lubricating Grease or equivalent when purging the lip seal grease.



STORING LUBRICANTS

Your equipment can operate at maximum performance only if clean lubricants are used. Use clean containers to handle all lubricants.

Lubricants should be stored in an area protected from dust, moisture, and other contaminants.



NOTES

Periodic Maintenance

⚠ WARNING Review the Safety section in this manual AND your GBM Operator's Manual before performing maintenance. Failure to do so, could cause severe injury or death.

LUBRICATION & MAINTENANCE INTERVALS

The requirements for lubrication and maintenance are shown on the maintenance charts in this section. Intervals of maintenance are based on normal operating conditions. If operating under more difficult conditions, use a shorter time interval between maintenance.

Use the hour meter (A) on the control pendant to determine the proper lubrication and maintenance intervals.



P150Q Pendant

LOCKOUT POWER BEFORE SERVICING

⚠ WARNING Severe personal injury or death can result from unexpected power unit start-up or machine movement.

LOCKOUT power before attempting to make repairs or adjustments to this equipment, unless otherwise indicated. Proper lockout will prevent accidents and save lives. Performing the lockout will also prevent the equipment from moving or operating unexpectedly.



HYDRAULIC OIL/FLUIDS UNDER PRESSURE

⚠ WARNING Escaping oil or other fluids under pressure can penetrate your skin causing serious injury.

Release all pressure before performing maintenance or repairs. Never weld near pressurized fluid lines.

DO NOT use your hands to check for leaks. When searching for leaks, use a piece of wood or cardboard.

Contact medical help immediately if any oil or fluid is injected into your skin. A serious infection or reaction can emerge without proper medical treatment.



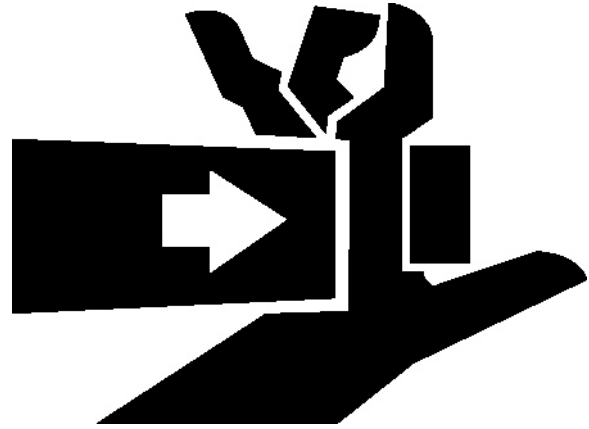
AVOID PINCH POINTS

⚠ WARNING Moving parts or the mishandling of parts can cause severe personal injury.

Keep hands away from moving parts.

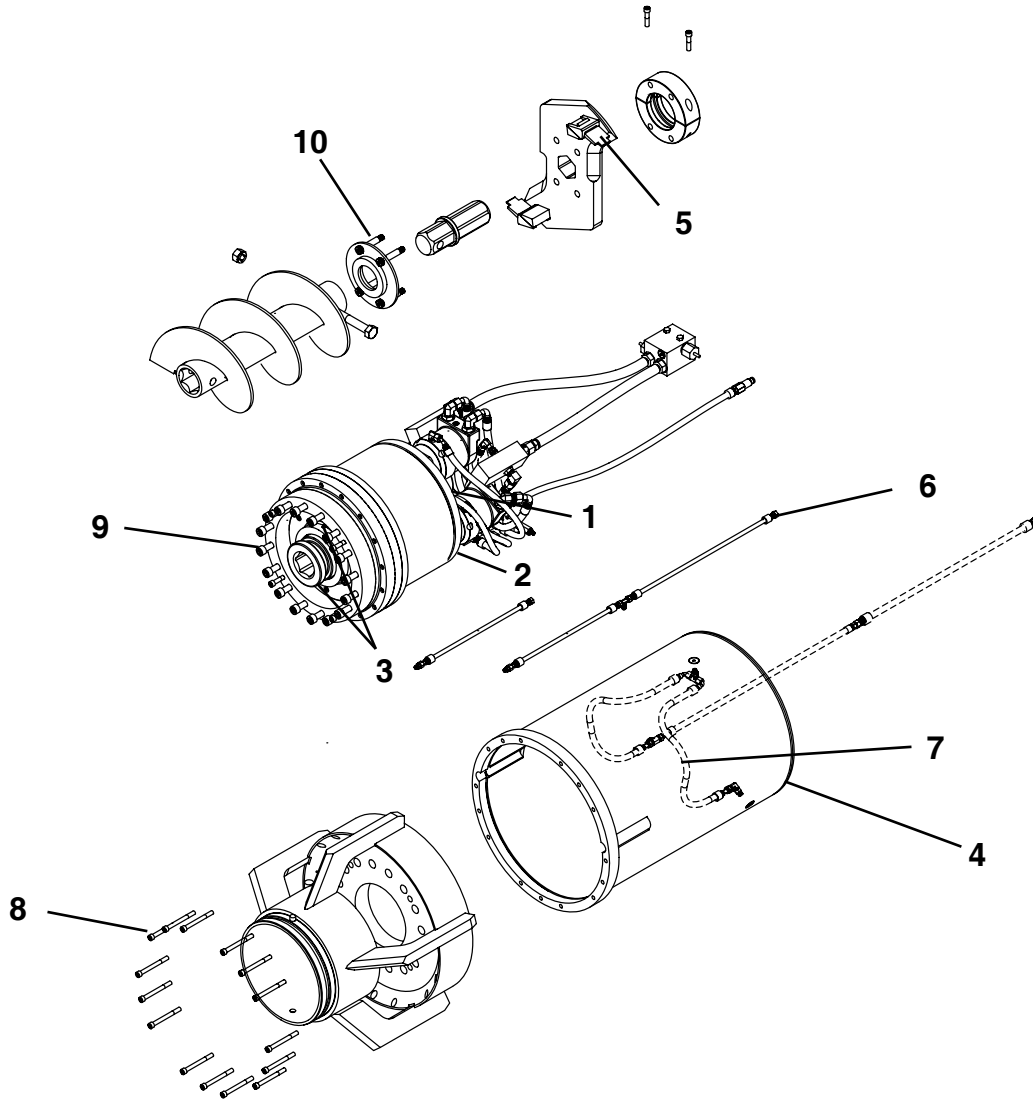
Watch your fingers, hands, and legs while equipment is in operation.

Handle parts carefully to avoid crushing and pinch point hazards.



MAINTENANCE CHARTS - POWERED REAMING HEAD

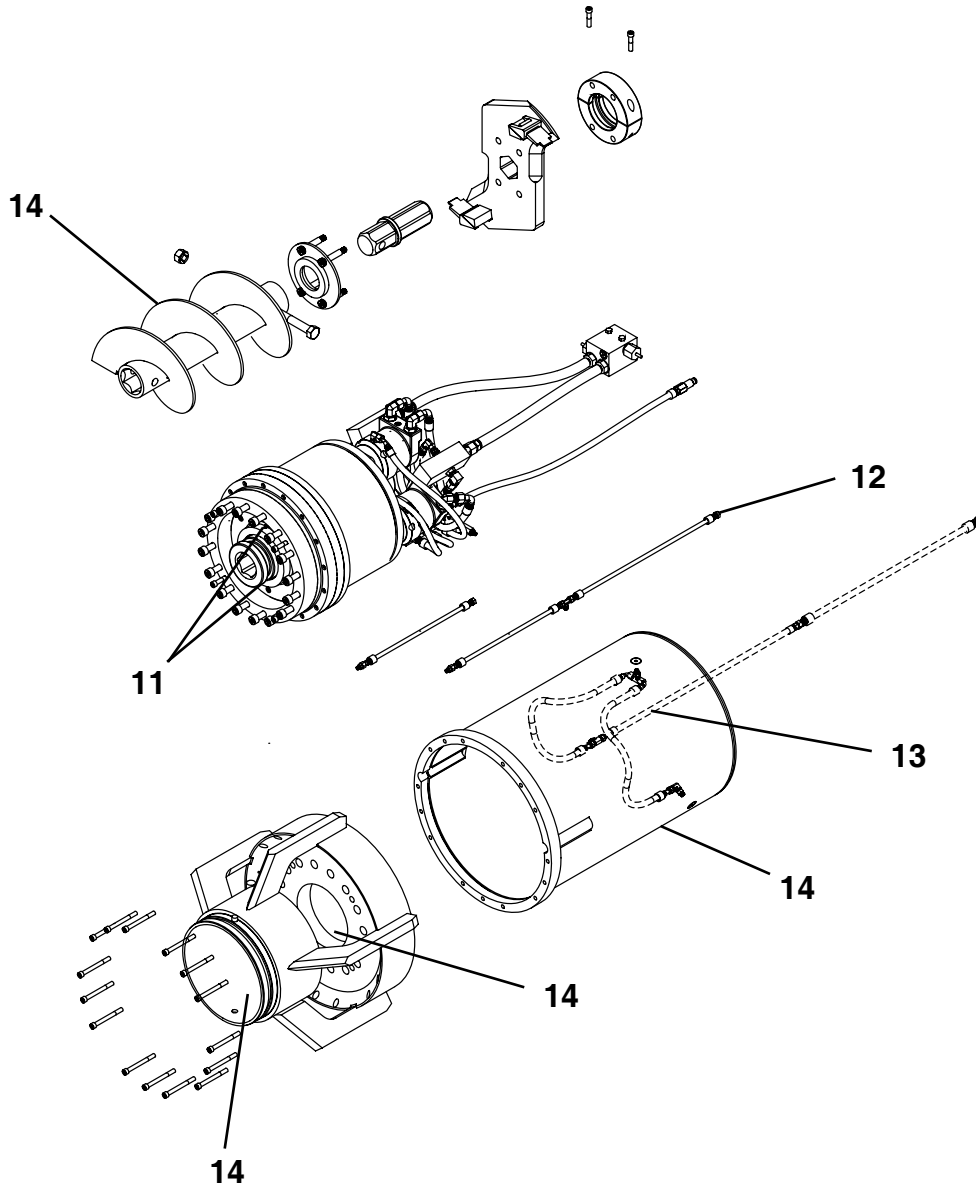
Use the item number in the chart to refer to the detailed maintenance procedures later in this section.



PRIOR TO EACH JOB LAUNCH

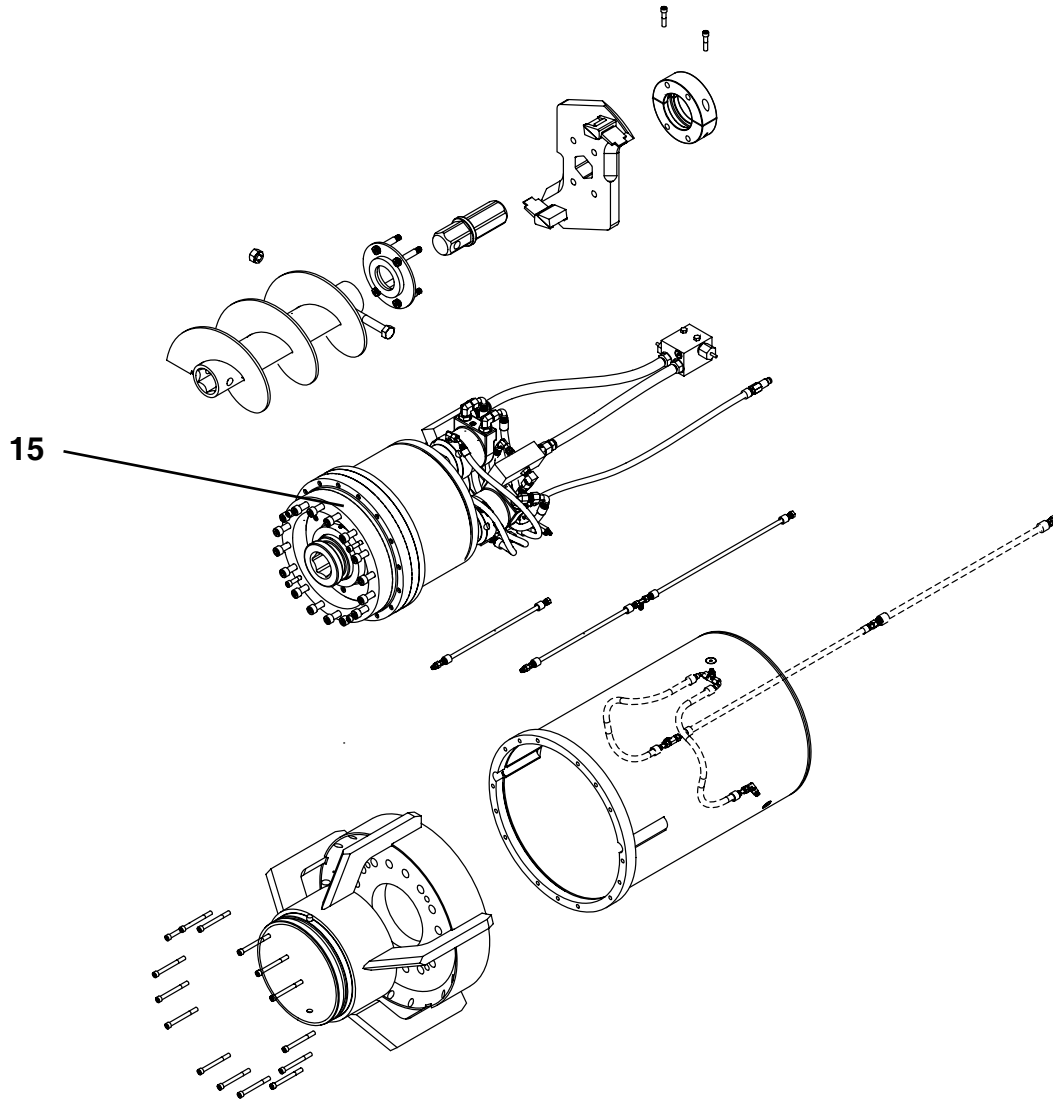
ITEM	COMPONENT	SERVICE	REQUIREMENT	MATERIAL
1.	Gear Box	Check Oil Level	Oil must be visible at check port.	Mobil® SHC 630
2.	Gear Box	Check For Water	If water is visible, gear box must be drained, flushed, seals replaced, & add new oil.	Mobil® SHC 630
3.	Gear Box	Purge Lip Seals	Lubricate until clean grease is visible on face.	Mobil® XHP222
4.	Bell End	Inspect	If damaged, contact Akkerman Aftermarket Support.	
5.	Cutter Teeth	Inspect	If damaged, replace with new.	
6.	Jetting Circuit	Check Lines & Ports	Flush if necessary.	2,500 psi Water
7.	Lubrication Circuit	Check Lines & Ports	Flush if necessary.	500 psi Water
*8.	Head Assy To Skin	Check Bolt Tightness	93 ft-lb (126 N·m) Torque	Torque Wrench
9.	Head Assy To Gear Box	Check Bolt Tightness	310 ft-lb (420 N·m) Torque	Torque Wrench
10.	Retainer Plate To Gear Box Assy	Check Bolt Tightness	175 ft-lb (240 N·m) Torque	Torque Wrench

* DN400 Only



AFTER EACH DRIVE

ITEM	COMPONENT	SERVICE	REQUIREMENT	MATERIAL
11.	Gear Box Assembly	Purge Lip Seals	Lubricate until clean grease is visible on face.	Mobil® XHP222
12.	Jetting Ports	Flush Ports & Lines	Maximum of 2,500 psi water.	Water
13.	Lubrication Ports	Flush Ports & Lines	Maximum of 500 psi water.	Water
14.	PRH Housing, Auger Chamber & Augers	Clean		Water



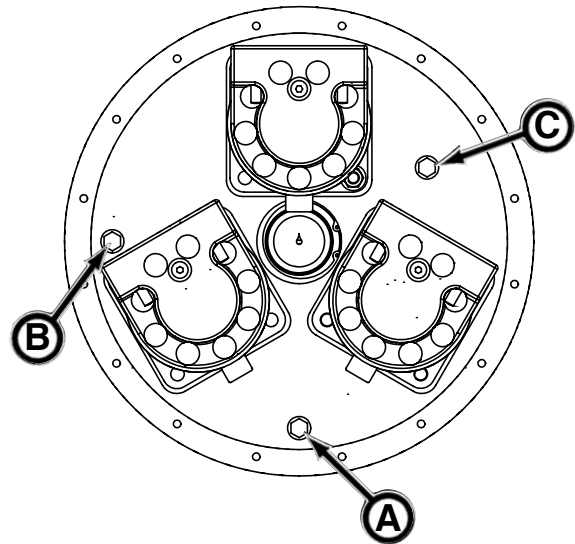
EVERY 2000 FEET

ITEM	COMPONENT	SERVICE	REQUIREMENT	MATERIAL
15.	Gear Box	Drain & Fill	Drain and fill with new oil.	Mobil® SHC 630

PRIOR TO EACH JOB LAUNCH

1. CHECK GEAR BOX OIL LEVEL

1. Be sure the gearbox positioned as shown with the drain port (A) in the 6 o'clock position and the check port (B) in the 9 o'clock position. Be sure to allow a few minutes for the oil to settle before checking oil level.
2. Clean area around check plug and remove check plug.
3. Visibly check if oil is at port level. If oil is not visible at port level, clean area around fill plug (C).
4. Remove fill plug and add Mobil SHC™ 630 Synthetic Bearing and Gear oil or equivalent until oil is at check port.
5. Replace fill and check plugs.

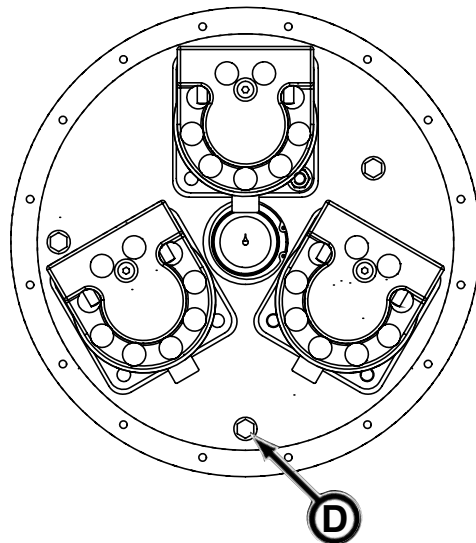


NOTICE

Replace gear box oil every 2,000 feet (610 m).

2. CHECK GEAR BOX FOR WATER

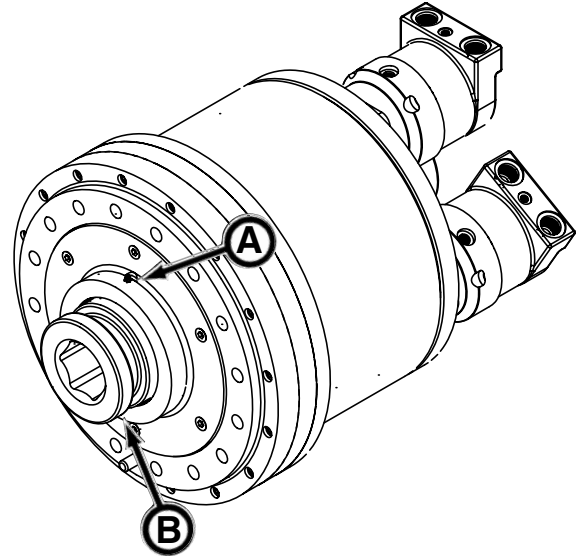
1. Clean area around drain plug (D).
2. Loosen drain plug to check for water. If water is visible, the gear box seals have failed. In this case the gear box must be drained and flushed, seals replaced and the gear box filled with fresh, clean Mobil SHC™ 630 Synthetic Bearing and Gear oil.



3. PURGE GEAR BOX LIP SEALS

NOTICE Lubricate seals at initial launch, then immediately after each drive while dirt is soft and flexible thereafter.

1. Remove one of the bearing grease plugs (retain plug) and install grease fitting (A).
2. Mount a grease gun equipped with Mobilgrease® XHP222 grease or equivalent to grease fitting.
3. Lubricate until clean grease is visible on front face of bearing assembly.
4. Rotate bearing and lubricate again until clean grease is visible on front face.
5. Remove grease fitting. Install teflon tape on grease plug and replace plug into port.
6. Repeat purging procedure with the other grease port (B). Once complete be sure both grease fittings are removed and replaced with teflon taped plugs.



4. INSPECT HOUSING BELL END

Inspect bell end (C) of housing for damage or excessive wear which may cause the final pipe to be improperly sealed.

Contact your Akkerman Aftermarket Support representative should bell end damage occur.



5. INSPECT CUTTER BIT TEETH

Inspect cutter teeth (D) for wear or damage. Repair or replace as necessary.

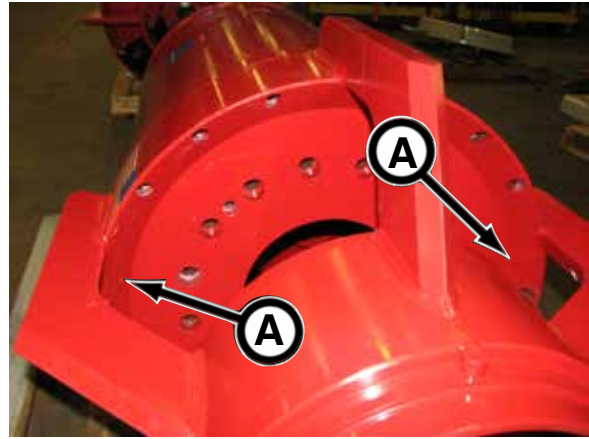


6. CLEAN JETTING LINES & PORTS

Flush jetting ports (A) with clean water by installing supply source to the jetting inlet hose.

Use a maximum of 2,500 psi (17,237 kPa) water pressure. In freezing weather, use compressed air to remove water from lines after flushing to prevent machine damage.

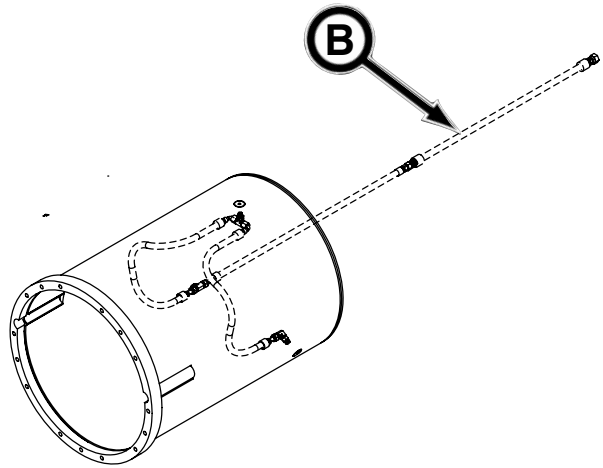
Be sure nozzles are clean. If plugged, remove nozzles for cleaning.



7. CLEAN LUBRICATION LINES & PORTS

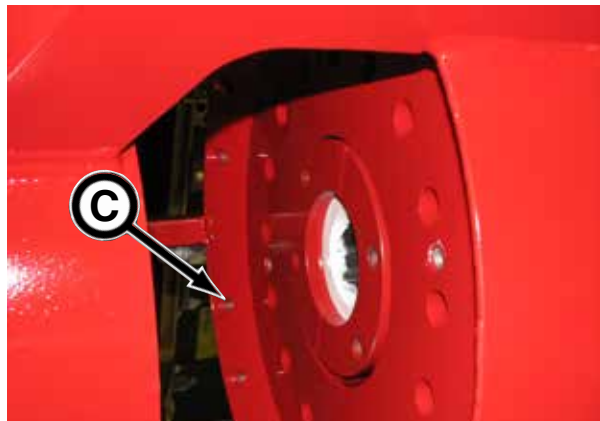
Flush pipe lubrication ports with clean water by installing supply source to the lubrication inlet hose (B) on back of rear section.

Use a maximum of 500 psi (3,447 kPa) water pressure. In freezing weather, use compressed air to remove water from lines after flushing to prevent machine damage.



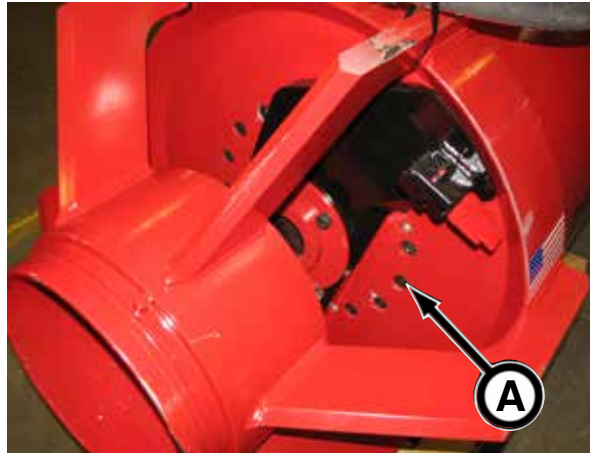
8. CHECK HEAD ASSEMBLY TO SKIN HOUSING ASSEMBLY BOLT TIGHTNESS (DN400 ONLY)

1. Visually check bolts for damage. Replace if damaged.
2. Check drive assembly to skin housing assembly bolt (C) tightness with calibrated torque wrench to 93 ft-lb (126 N·m) torque.
3. If bolts do not hold torque, the bolt(s) must be replaced with new.



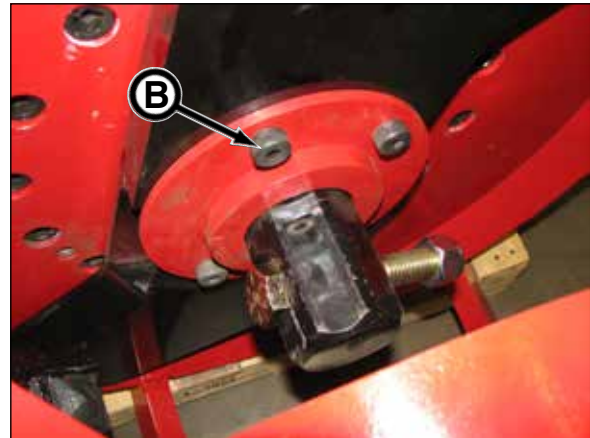
9. CHECK HEAD ASSEMBLY TO GEAR BOX ASSEMBLY BOLT TIGHTNESS

1. Visually check bolts for damage. Replace if damaged.
2. Check reaming assembly to gear box assembly bolt (A) tightness with calibrated torque wrench to 310 ft-lb (420 N·m) torque.
3. If bolts do not hold torque, the bolt(s) must be replaced with new.



10. CHECK RETAINER PLATE TO GEAR BOX ASSEMBLY BOLT TIGHTNESS

1. Visually check bolts for damage. Replace if damaged.
2. Check retainer plate to gear box assembly bolt (B) tightness with calibrated torque wrench to 186 ft-lb. (252 N·m) torque.
3. If bolts do not hold torque, the bolt(s) must be replaced with new.



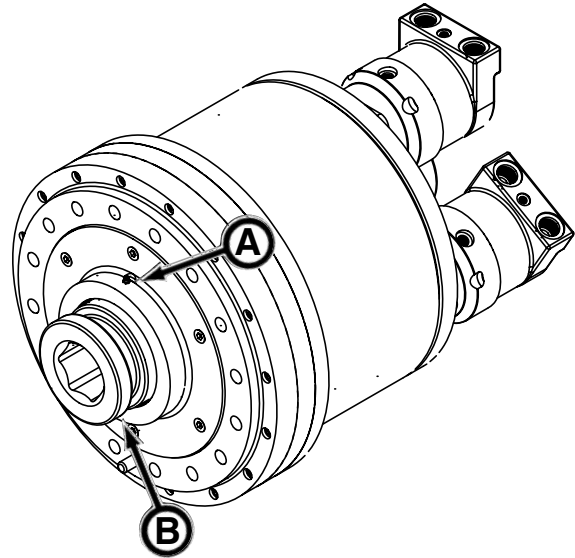
AFTER EACH DRIVE

11. PURGE GEAR BOX LIP SEALS

NOTICE

Lubricate seals at initial launch, then immediately after each drive while dirt is soft and flexible thereafter.

1. Remove one of the bearing grease plugs (retain plug) and install grease fitting (A).
2. Mount a grease gun equipped with Mobilgrease® XHP222 grease or equivalent to grease fitting.
3. Lubricate until clean grease is visible on front face of bearing assembly.
4. Rotate bearing and lubricate again until clean grease is visible on front face.
5. Remove grease fitting. Install teflon tape on grease plug and replace plug into port.
6. Repeat purging procedure with the other grease port (B). Once complete be sure both grease fittings are removed and replaced with teflon taped plugs.

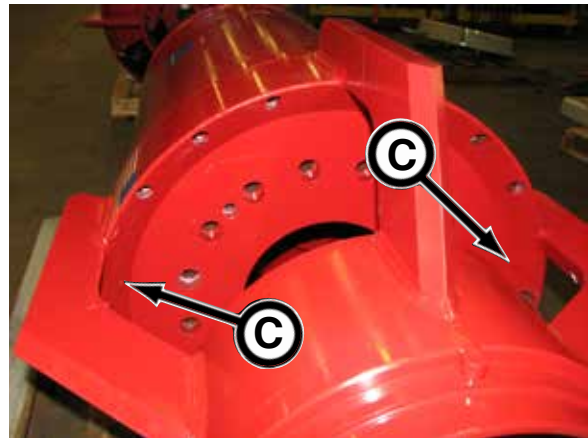


12. CLEAN JETTING LINES & PORTS

Flush jetting ports (C) with clean water by installing supply source to the jetting inlet hose.

Use a maximum of 2,500 psi (17,237 kPa) water pressure. In freezing weather, use compressed air to remove water from lines after flushing to prevent machine damage.

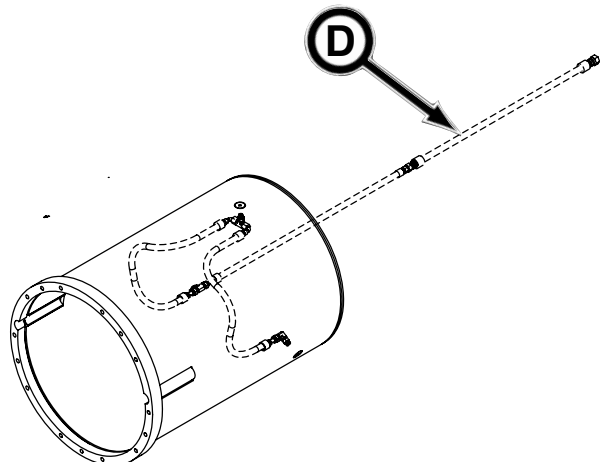
Be sure nozzles are clean. If plugged, remove nozzles for cleaning.



13. CLEAN LUBRICATION LINES & PORTS

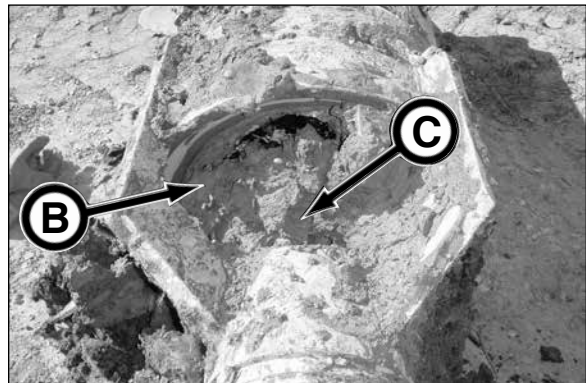
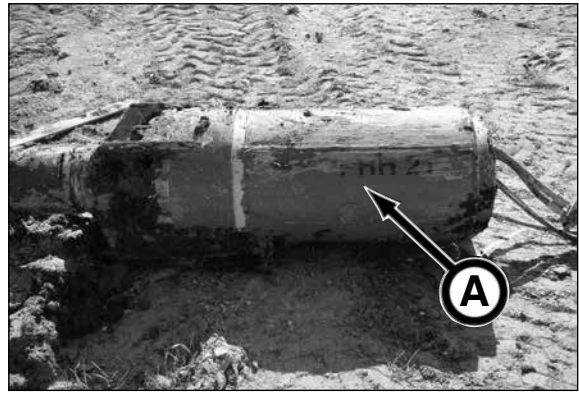
Flush pipe lubrication ports with clean water by installing supply source to the lubrication inlet hose (D) on back of rear section.

Use a maximum of 500 psi (3,447 kPa) water pressure. In freezing weather, use compressed air to remove water from lines after flushing to prevent machine damage.



14. CLEAN PRH HOUSING, AUGER CHAMBER & AUGERS

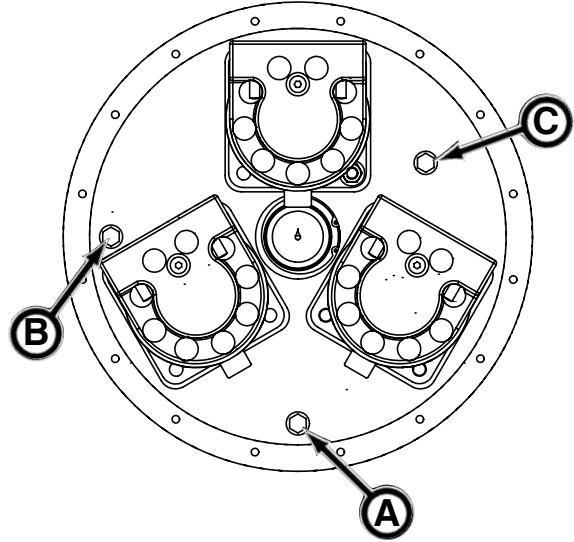
Clean PRH to remove all dirt from housing (A), cutting area (B), auger chamber (C), and augers while the dirt is soft and flexible and before the dirt hardens to PRH.



EVERY 2000 FEET

15. DRAIN & FILL GEAR BOX

1. Be sure the gearbox positioned as shown with the drain port (A) in the 6 o'clock position and the check port (B) in the 9 o'clock position. Be sure to allow a few minutes for the oil to settle before draining oil.
2. Clean area around drain (A), check (B) and fill (C) plugs.
3. Drain oil from gear box by removing drain plug (A) into a properly sized catch pan. Be sure to recycle the drained oil properly.
4. Replace drain plug.
5. Add fresh, clean Mobil SHC™ 630 Synthetic Bearing and Gear oil through the fill port until the oil level flows out of check port.
6. Replace fill and check plugs.



Troubleshooting

Powered Reaming Head

Problem	Cause	Solution
High auger torque.	Too many spoils.	Reduce advance rate of PCH.
	Sticky spoils.	Add polymer to spoils.
	Long drive length.	Add polymer to reduce load.
	Improper connections on quick disconnects.	Check to be sure all connections on quick disconnects are fully engaged.
Operating pressure too high.	Advance rate too fast.	Slow advance rate.
	No polymer in water at jetting.	Add polymer to water jetting.
	Spoils are sticky/dry.	Increase jetting psi.
	Improper connections on quick disconnects.	Check to be sure all connections on quick disconnects are fully engaged.
Must stop mid way in product pipe installation to remove casing.	Temporary casing not timed with product pipe.	Add 1' or 2' section of product pipe behind PRH.
Hydraulic oil leaking in PRH assembly.	Case drain reliefs dumping out due to high return pressure.	Operate at slower speed, reduced volume.
	Oil too cold.	Operate at lower gpm until oil is warm.
	Pinched case drain hose.	Remove hose from pipe joint or replace hose.

NOTES

Specifications

POWERED REAMING HEAD



Diameter	
DN400	23.6 in. (599 mm)
Diameter With Overcut	25.1 in. (638 mm)
DN600	30.5 in. (775 mm)
Diameter With Overcut	32 in. (813 mm)
Drive System	
Auger Drive	
Max. Torque	20,000 ft-lbs (27,116 N·m)
Max. Speed	38 rpm
Lead Casing	16" HD

Akkerman Inc. reserves the right to improve its product without notice or obligation.

TORQUE CHART

Use these torque values as a guideline when tightening hardware unless otherwise specified in this manual.

Lubricated Coarse UNC Threads Grade 8 Fasteners			Lubricated Fine UNF Threads Grade 8 Fasteners		
Bolt Size	Torque		Bolt Size	Torque	
	ft. lbs.	(N·m)		ft. lbs.	(N·m)
1/4 - 20	10	(14)	1/4 - 28	11	(15)
5/16 - 18	20	(27)	5/16 - 24	22	(30)
3/8 - 16	35	(47)	3/8 - 24	39	(53)
7/16 - 14	56	(76)	7/16 - 20	62	(84)
1/2 - 13	85	(115)	1/2 - 20	96	(130)
9/16 - 12	123	(167)	9/16 - 18	137	(186)
5/8 - 11	170	(231)	5/8 - 18	192	(260)
3/4 - 10	301	(408)	3/4 - 16	336	(456)
7/8 - 9	450	(610)	7/8 - 14	500	(678)
1 - 8	680	(922)	1 - 12	740	(1003)
1-1/8 - 7	960	(1302)	1-1/8 - 12	1030	(1397)
1-1/4 - 7	1360	(1844)	1-1/4 - 12	1500	(2034)
1-1/2 - 6	2360	(3200)	1-1/2 - 12	2660	(3607)

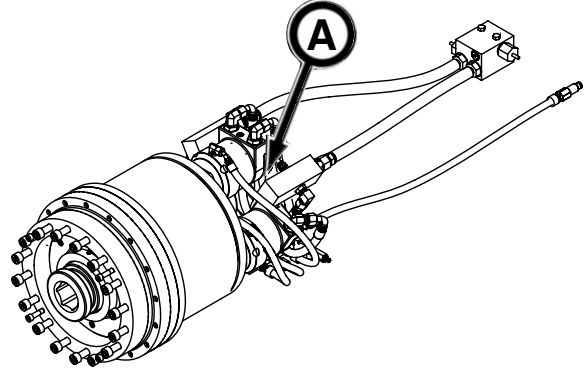
Identification Numbers

Model and serial numbers are required when ordering parts or requesting service information. Record your model and serial numbers below.

POWERED REAMING HEAD (A)

Model Number _____

Serial Number _____



NOTES

Safety Data Sheets

The Federal Occupational, Safety, and Health Administration (OSHA) Standard 29 CFR 1910.1200, require that specific safety data sheets (SDS) be available to employees before operating this equipment. This may include information on substances contained in this equipment such as hydraulic fluid and gear lubricant.

Akkerman Inc. will provide, at no cost, SDS which apply to its product line. Simply contact your Akkerman Aftermarket Support representative for a copy.

To ensure a prompt response to your SDS request, include your return address (including zip or postal code) and the equipment's model numbers and serial numbers with your request.

NOTES

Warranty

Akkerman Inc. warrants that all equipment manufactured by it be free from defects due to workmanship or material under normal use and service for a period of 90 days. This warranty does not apply to normal wear items such as cutter teeth, filters, etc. Akkerman Inc. does not warrant the fitness of its equipment for a particular purpose or application.

Warranty

NOTES

Index

A

After each drive maintenance chart	7-4
After each drive maintenance detail	7-10
Assembly	4-1
Auger casings, handling	1-3
Auger control, PRH -	3-2
Auger drive adapter	5-6
Auger, keep away from	1-5

B

Bearing assembly lip seals	4-2, 6-1
Bypass mode	5-4

C

Casing joint keepers	5-8
Casings auger, handling	1-3
Casing thrust adapter	5-6
Contents	ii
Control, PRH - auger	3-2
Controls & instruments	3-1
Control, thrust cylinder	3-2
Cutter bit teeth	7-7
Cylinder control, thrust	3-2

D

Dirt bucket	5-6
-------------------	-----

E

Equipment, inspect	1-4
Every 2000 feet	7-5
Every 2000 feet maintenance chart	7-5
Every 2000 feet maintenance detail	7-12
Exposure, laser light	1-7

F

Fire prevention	1-5
Fluids under pressure	1-2, 7-1

G

Gauges, hydraulic pressure	3-3
Gear box assembly	4-1,4-2,7-6,7-7
Gear box drain and fill	7-12
Gear box lip seal lubricant	6-1
Gear box lubricant	6-1
Gear box oil level	4-1, 7-6
Gear box oil quality	7-6
Gear box to head assembly	7-9
Gear box to retainer plate	7-9
Guidelines, operating	5-1

H

Handling auger casings	1-3
Head assembly to gear box	7-9
Head assembly to skin housing	7-8
High pressure hydraulics	1-6
Housing bell end	7-7
Hydraulic pressure gauges	3-3
Hydraulics, high pressure	1-6

I

Identification numbers	10-1
Information, safety	1-1
Inspect equipment	1-4
Installation process, powered reaming head ...	5-2
Installing powered reaming head	5-5
Installing PRH into launch shaft	5-7
Instruments, controls &	3-1
Intervals, lubrication & maintenance	7-1
Introduction	i

J

Jacking speed switch	3-1
Jetting	5-3
Jetting connection	5-7
Jetting hookup	5-3
Jetting lines & ports	7-8, 7-10
Jetting supply requirements	5-3
Jetting, using	5-4

K

Keepers, casing joint	5-8
-----------------------------	-----

L

Laser light exposure	1-7
Launch shaft, installing PRH into	5-7
Lip seal lubricant, gear box	6-1
Loads, suspended	1-2
Lockout power	1-2, 7-1
Lubricant, gear box	6-1
Lubricant, gear box lip seal	6-1
Lubricants	6-1
Lubricants, storing	6-1
Lubricating product pipe	5-4
Lubrication connection	5-7
Lubrication lines & ports	7-8, 7-10
Lubrication & maintenance intervals	7-1
Lubrication mode	5-4
Lubrication, using pipe	5-4

M

Maintenance chart, after each drive	7-4
Maintenance chart, every 2000 feet	7-5
Maintenance charts - powered reaming head ..	7-3
Maintenance charts - prior to each job launch ...	7-3
Maintenance detail, after each drive	7-10
Maintenance detail, every 2000 feet	7-12
Maintenance detail, prior to each job launch	7-6
Maintenance intervals, lubrication &	7-1
Maintenance, safe	1-4
Multi-port quick disconnect	5-8

N

No smoking in tunnel	1-7
Numbers, identification	10-1
Numbers, serial	10-1

O

Operating guidelines	5-1
Operation	5-1
Operator's manual, read	1-1

P

Periodic maintenance	7-1
Personnel away from moving parts	1-3
Pinch points	1-4
Pipe lubrication, using	5-4
Powered reaming head from reception shaft... ..	5-14
Powered reaming head installing	5-5
Power, lockout	1-2, 7-1
Pressure gauges, hydraulic	3-3
Pressure switch, rotation	3-1
PRH - auger control	3-2
PRH lead auger	5-7
PRH terminology	2-1
Prior to each job launch, maintenance charts ...	7-3
Prior to each job launch maintenance detail	7-6
Process, powered reaming head installation	5-2
Product pipe, lubricating	5-4
Protective clothing	1-1
Protective equipment	1-1

R

Reception shaft, removing PRH from	5-14
Recycle waste	1-7
Removing PRH from reception shaft	5-14
Requirements, jetting supply	5-3
Retainer plate to gear box	7-9
Rotation pressure switch	3-1

S

Safety	1-1
Safety data sheets	11-1
Safety information	1-1
Skin housing to head assembly	7-8
Specifications	9-1
Speed switch, jacking	3-1
Storing lubricants	6-1
Suspended loads	1-2
Switch, jacking speed	3-1
Switch rotation pressure	3-1

T

Terminology	2-1
Terminology, PRH	2-1
Thrust adapter	5-6
Thrust cylinder control	3-2
Thrust plate	5-6
Torque chart	9-2
Troubleshooting	8-1
Tunnel ventilation	1-5

U

Unauthorized welding	1-3
Using jetting	5-4
Using pipe lubrication	5-4
Using the powered reaming head	5-3

V

Ventilation, tunnel	1-5
---------------------------	-----

W

Warranty	12-1
Waste, recycle	1-7